



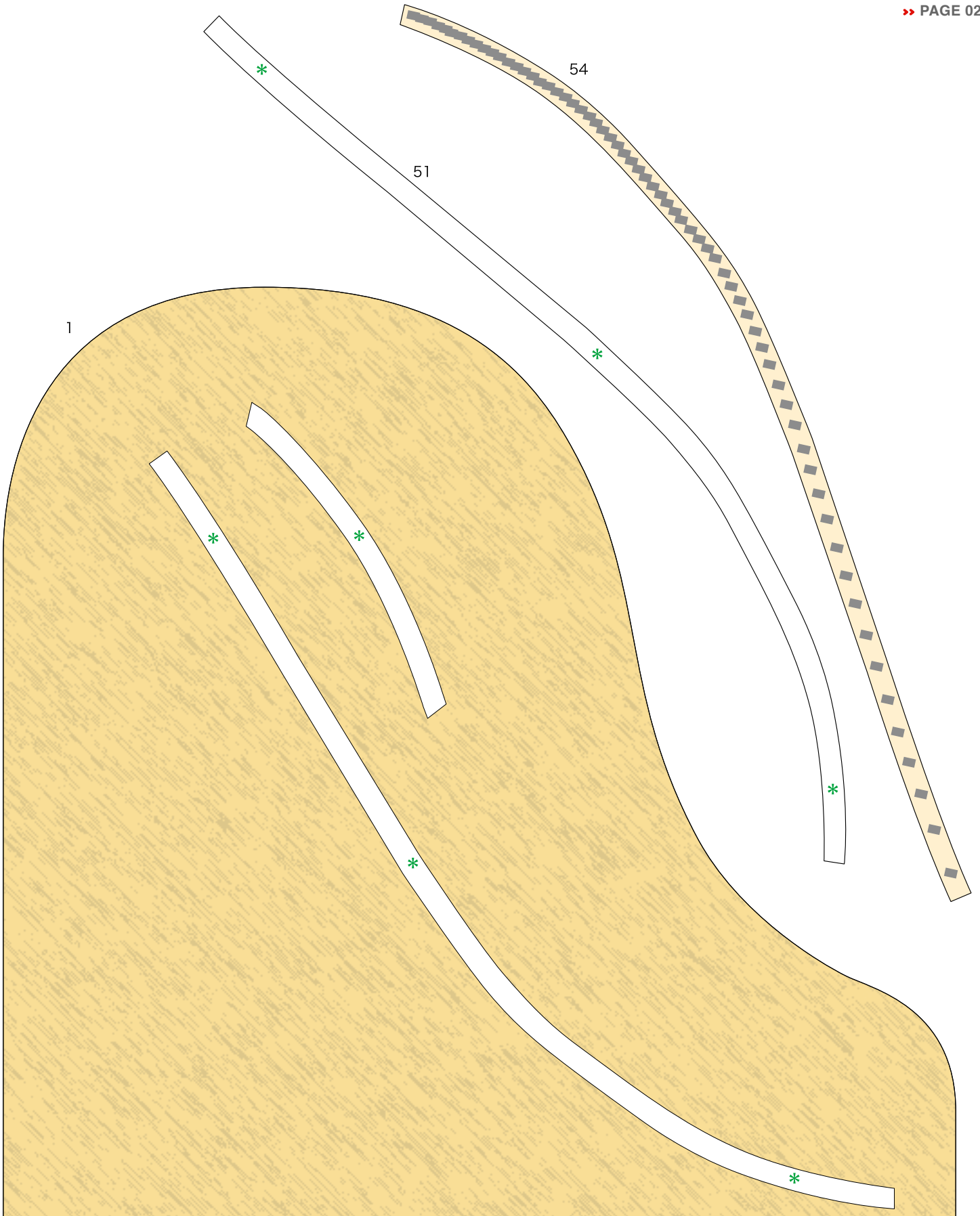
Grand piano

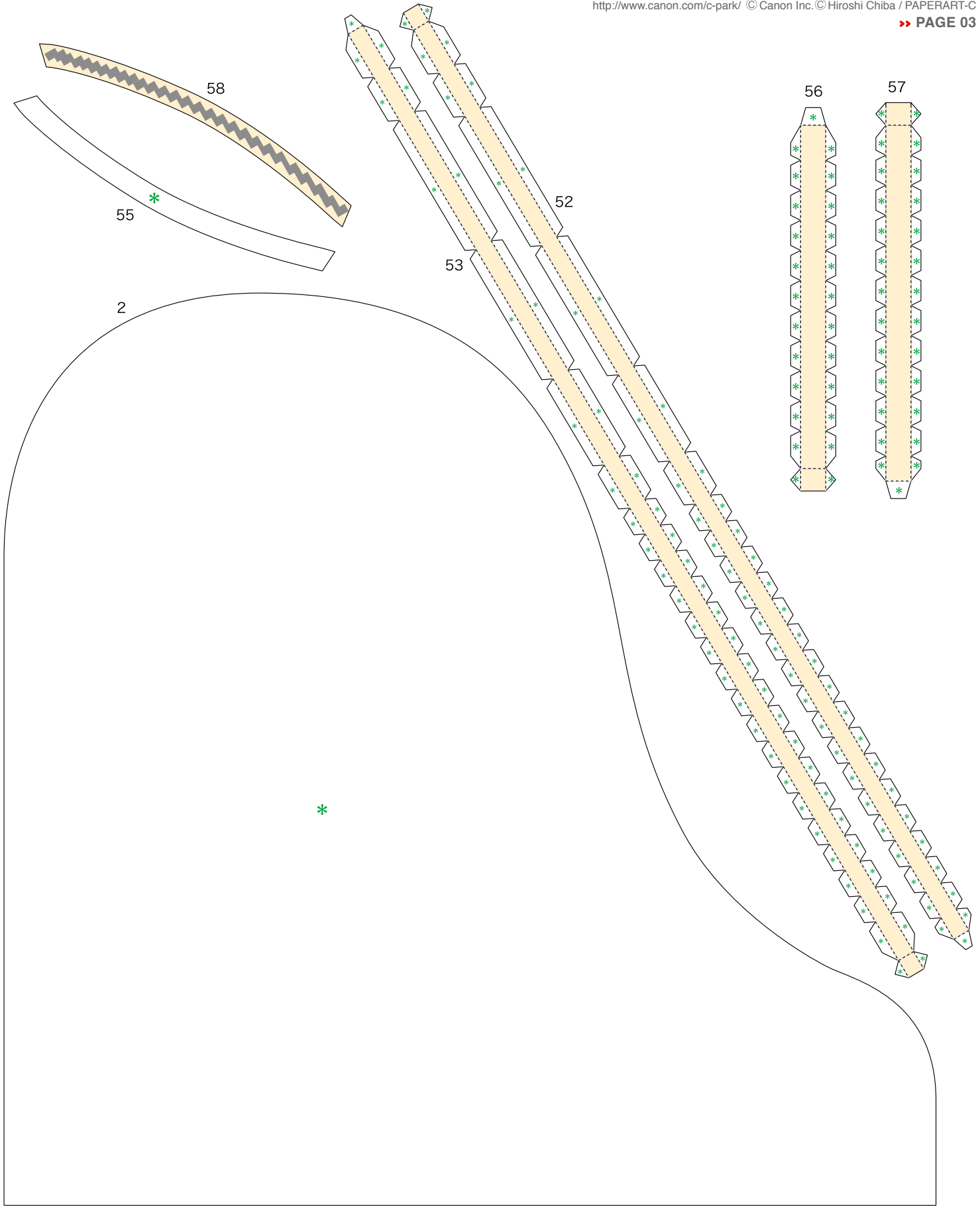
A piano is a keyboard instrument that makes musical sounds through pressing of keys which cause hammers to strike strings. A standard-sized piano has 88 keys and is capable of playing a very broad range of notes. It is unclear when the first piano was created, but we know that pianos were around already in 1700. The grand piano, on which this paper craft is based, has undergone several changes to aspects such as the tightness and shape of its strings, having many improvements carried out over a long time and resulting in the shape it has today. The grand piano is a particularly large type of piano. Longer strings make for a better resonance, and so the grand piano has its frame parallel to the floor, allowing for a large space to house long strings. These long strings also mean that it is very large in size, making the grand piano perfect for use in big concert halls with high ceilings, or other areas with good acoustics.

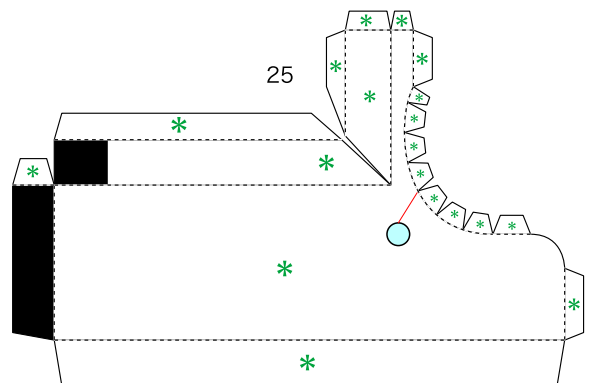
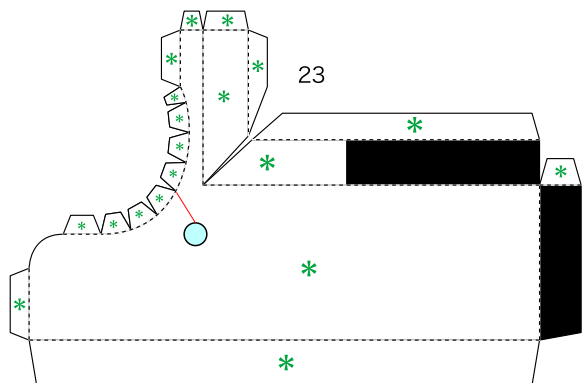
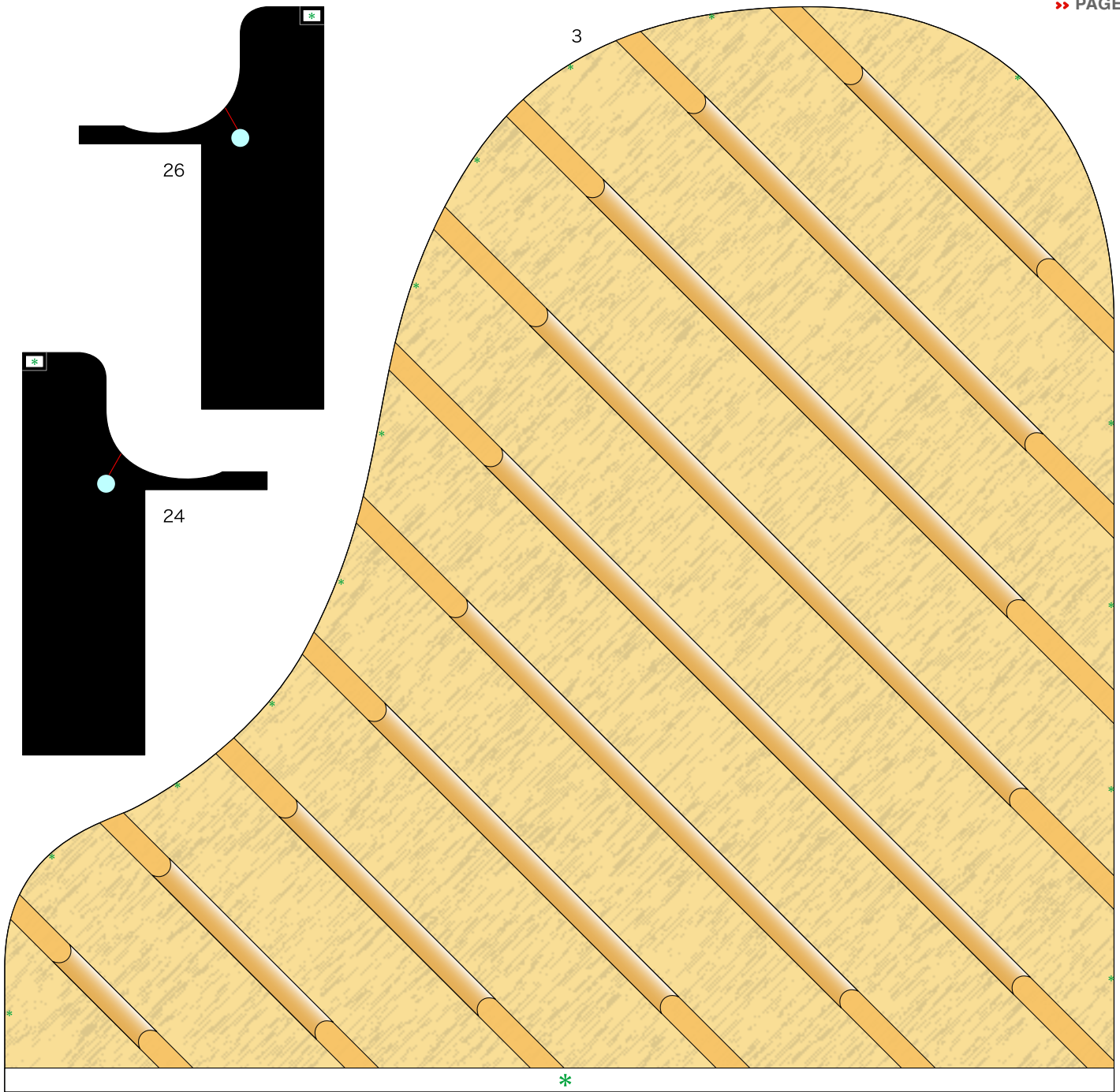
Parts sheet [Pattern] : Twenty-five A4 sheets

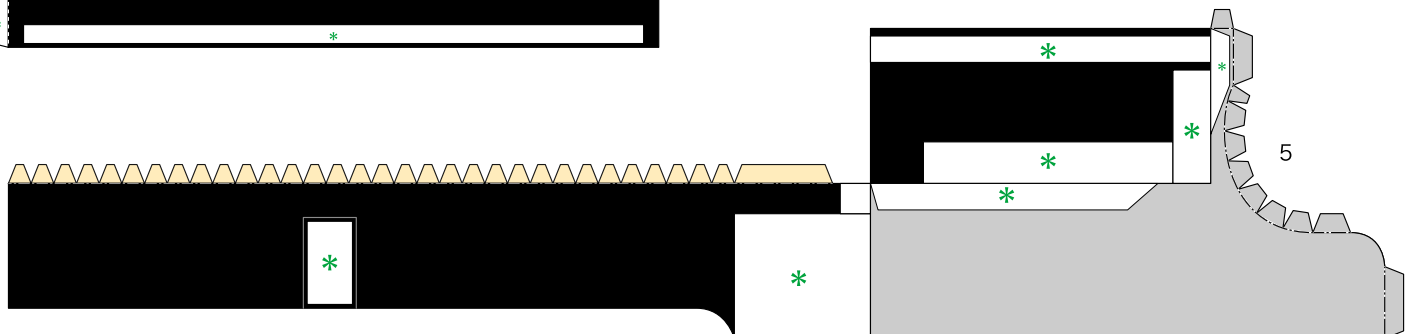
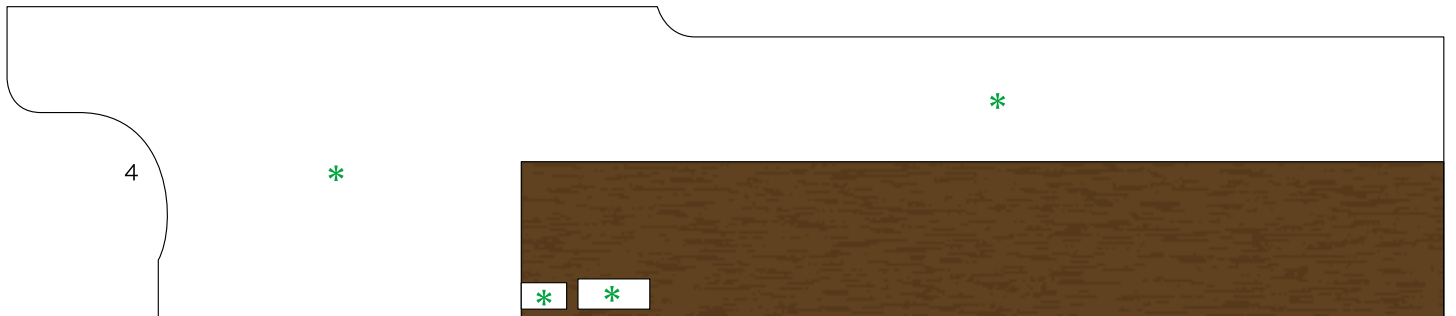
No. of Parts: 236

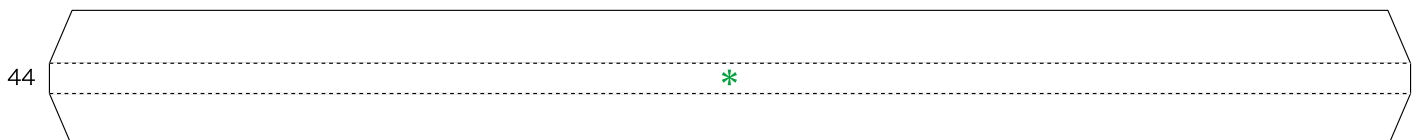
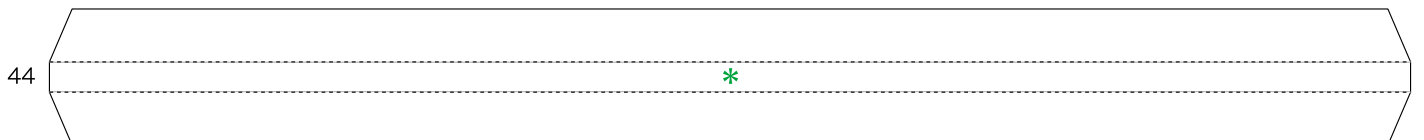
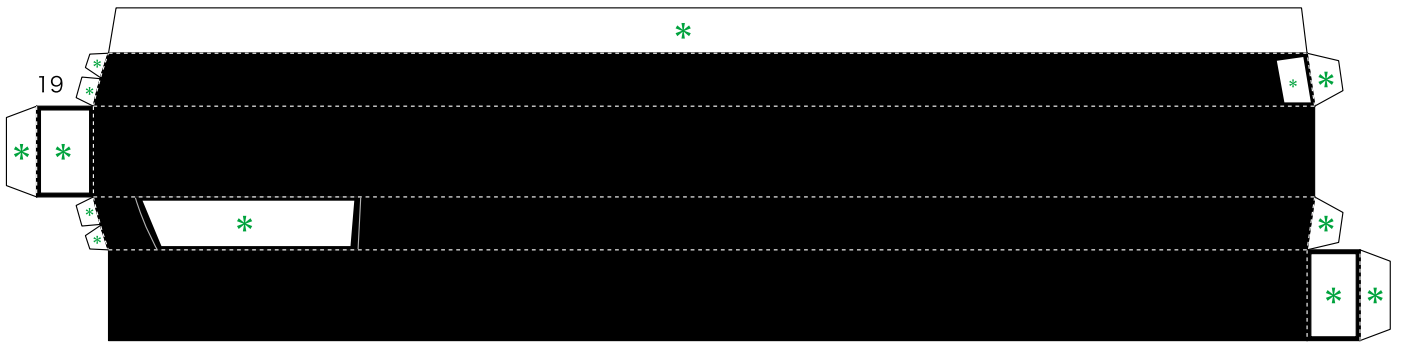
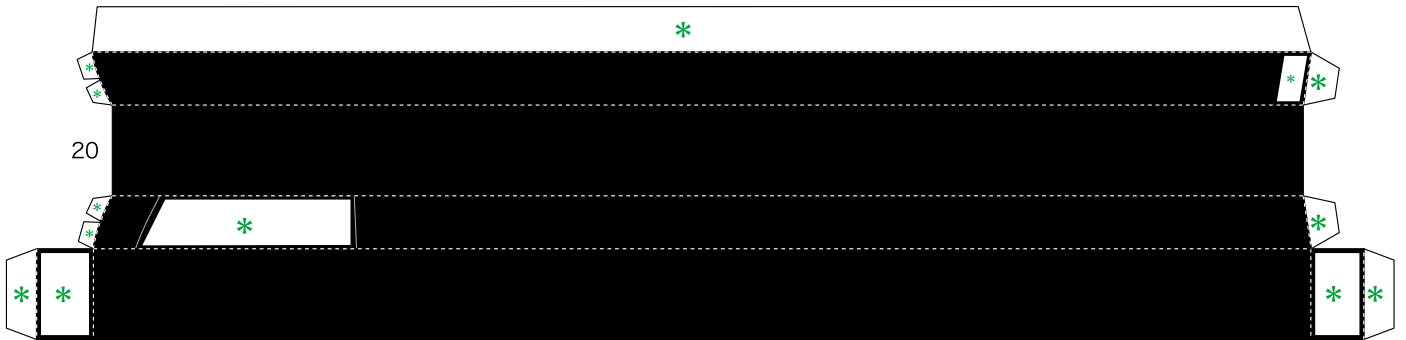
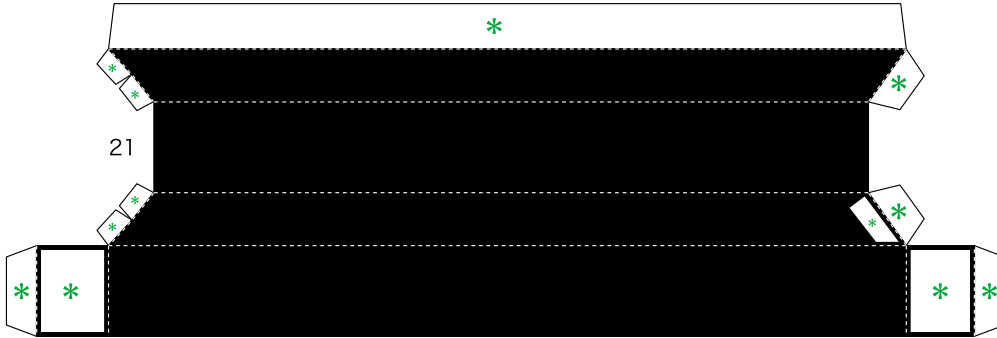
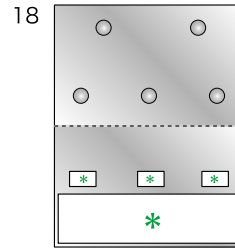
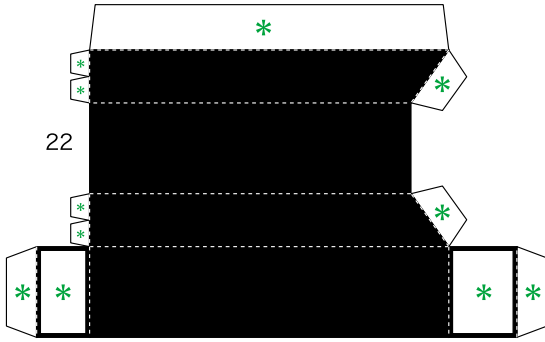
When assembling the parts, be sure to carefully read the "Assembly Instructions" along with the parts sheet. This model was designed for Papercraft and may differ from the original in some respects.

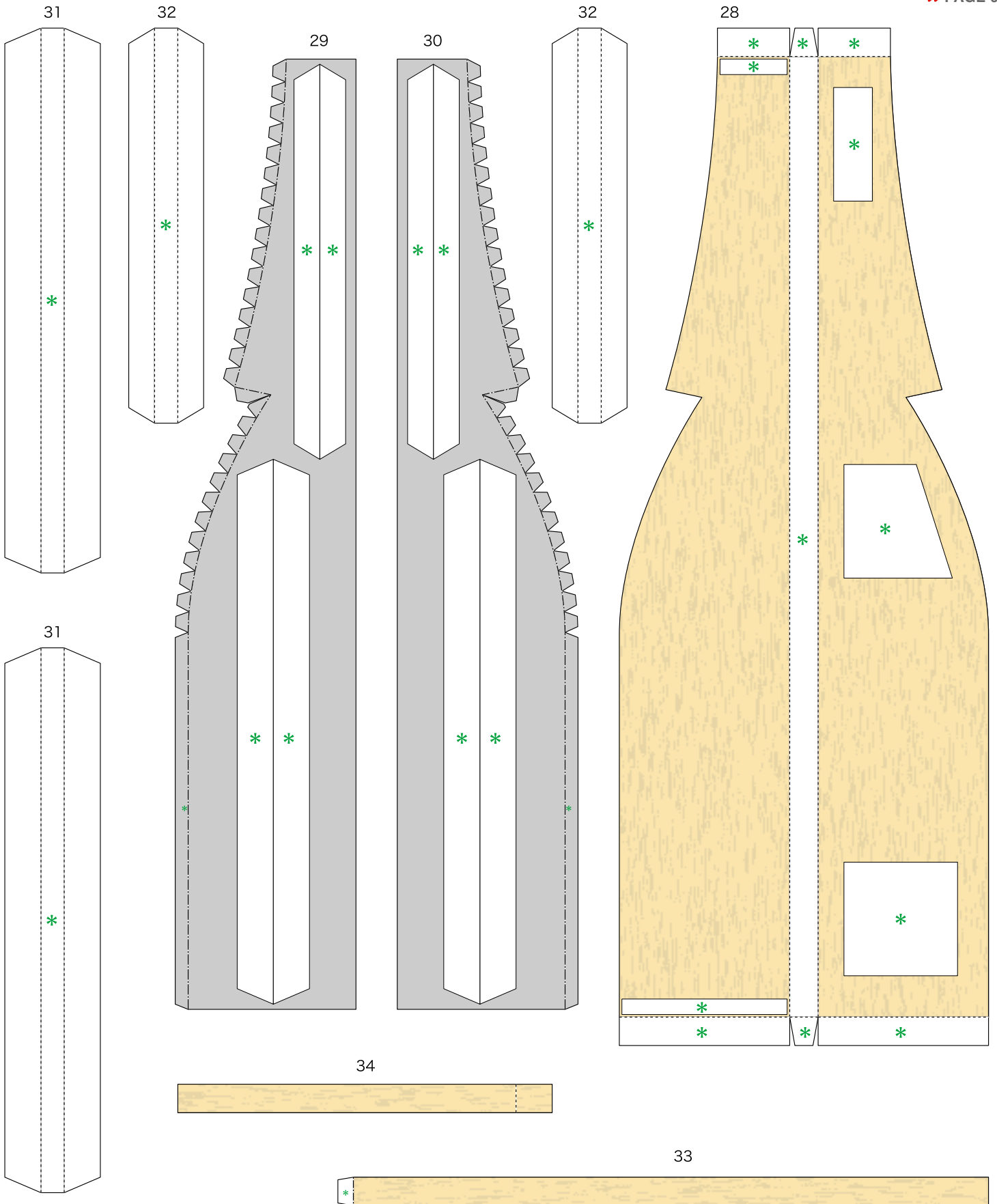


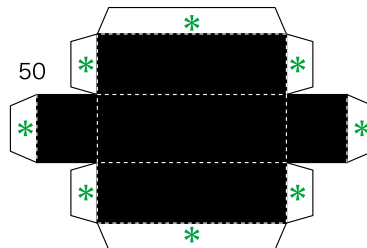
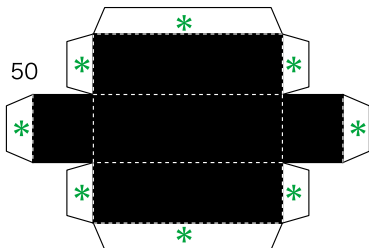
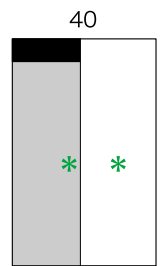
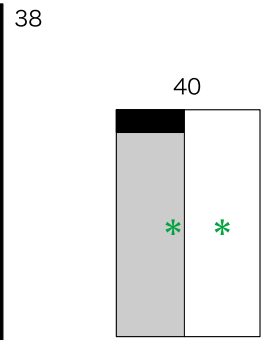
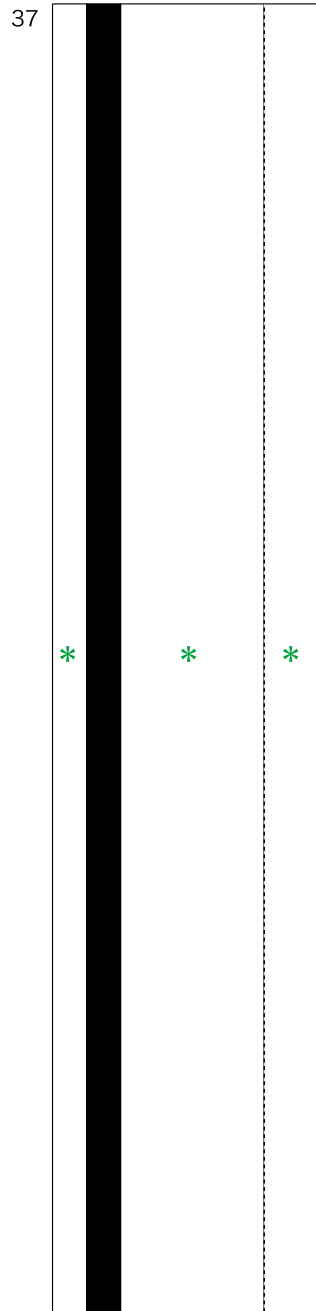
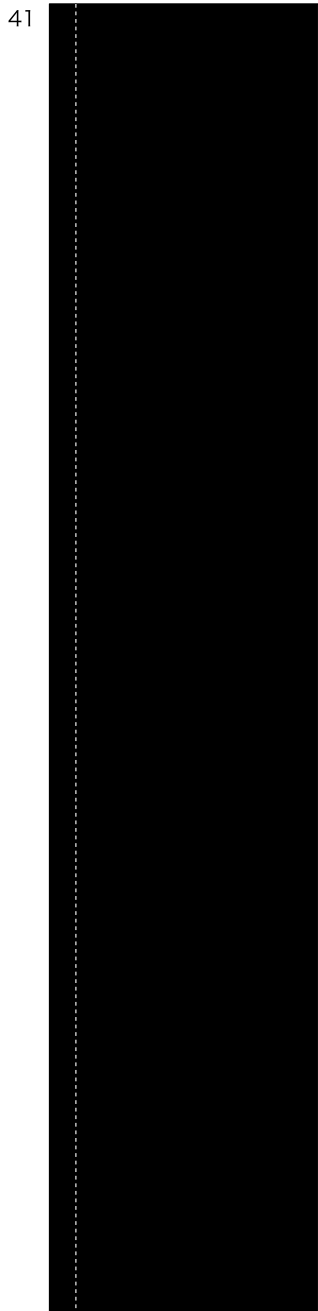


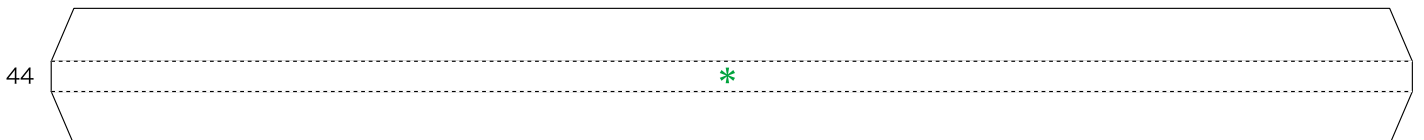
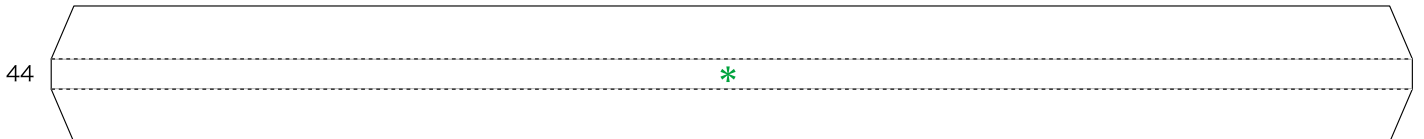
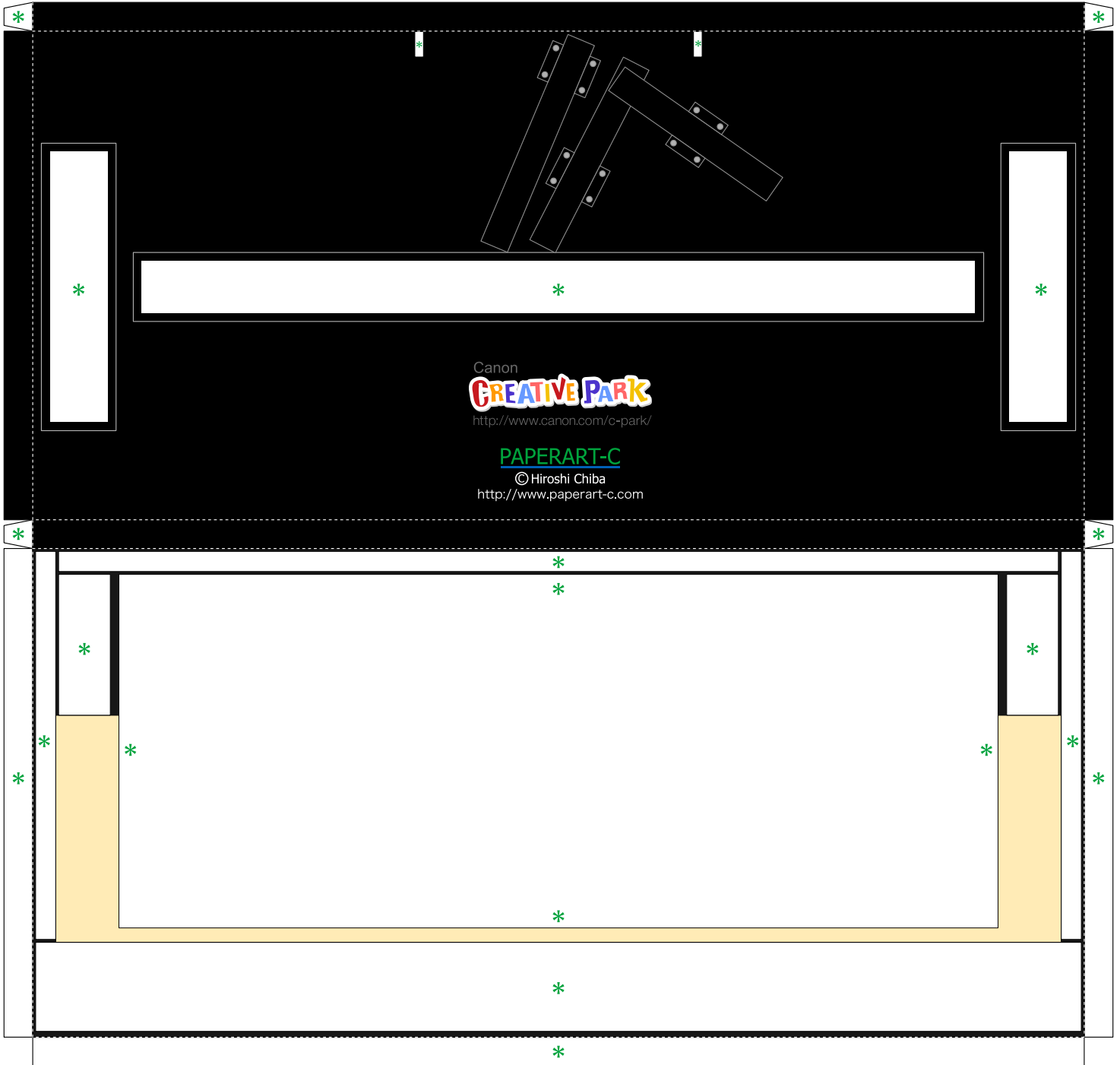




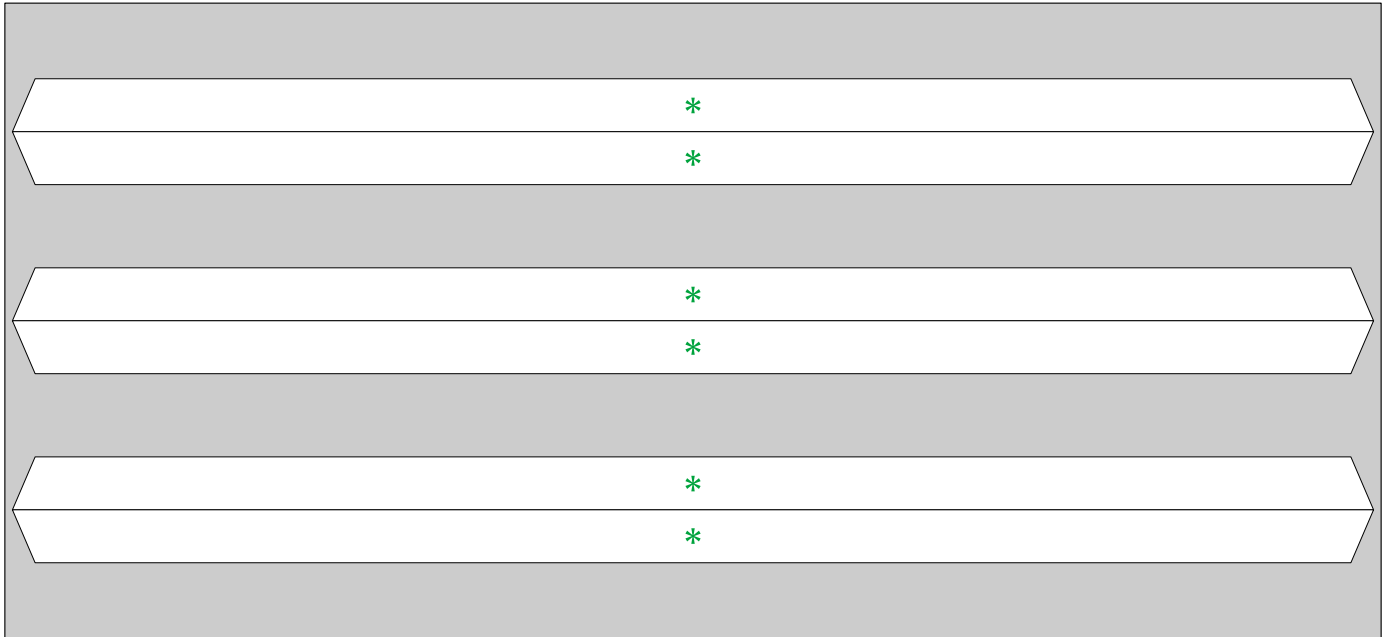




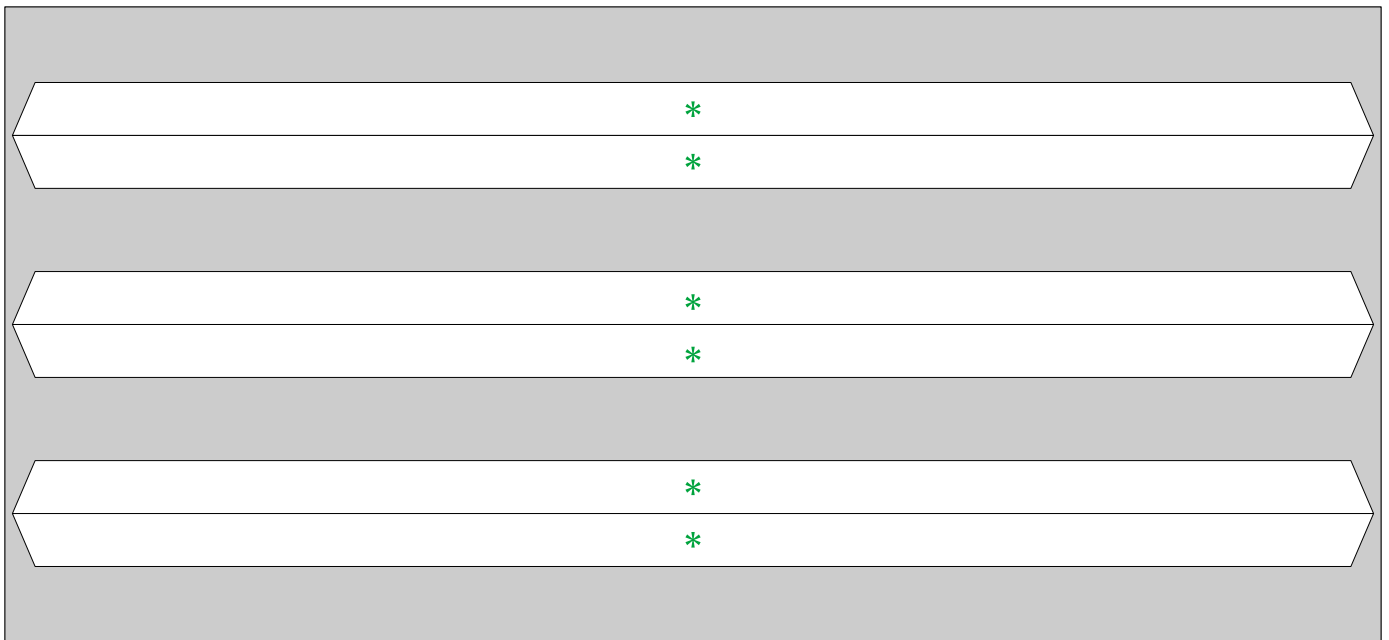




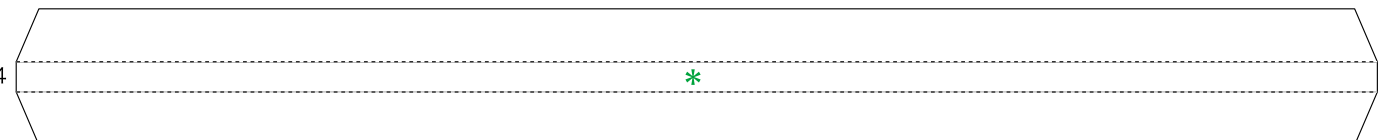
43



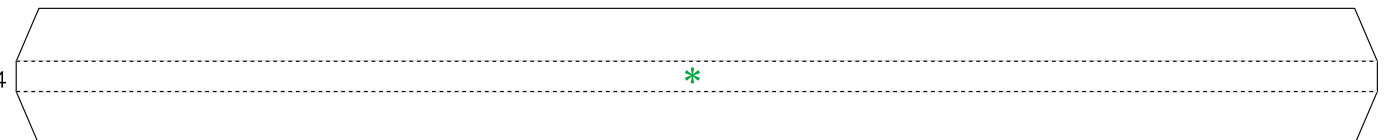
43

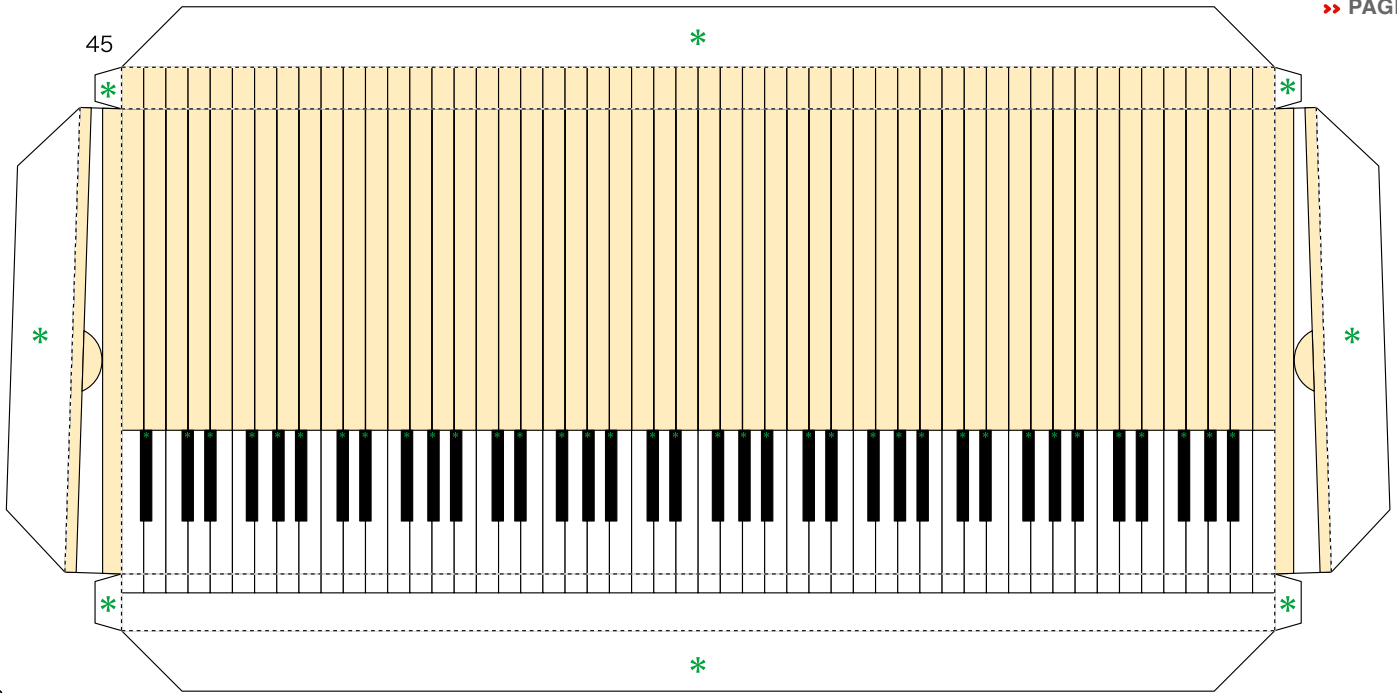


44

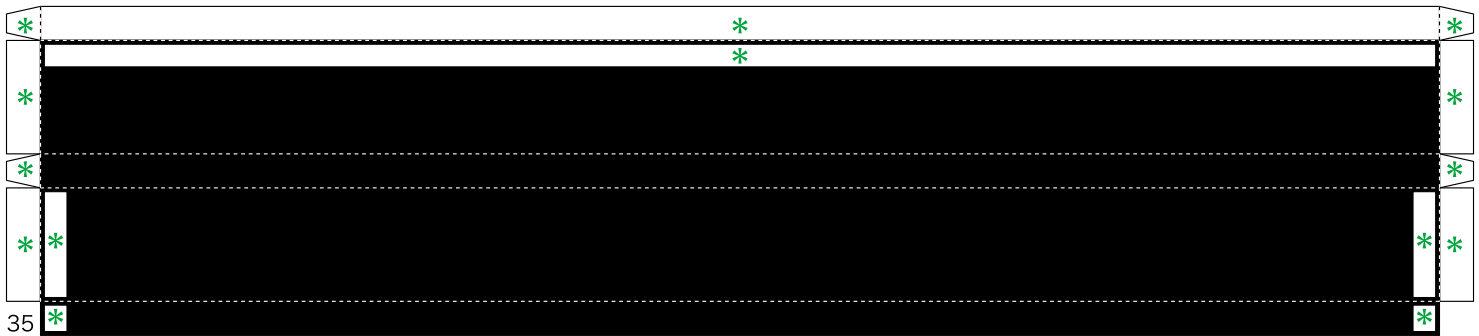
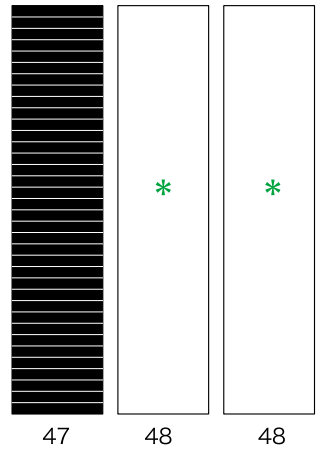


44





46

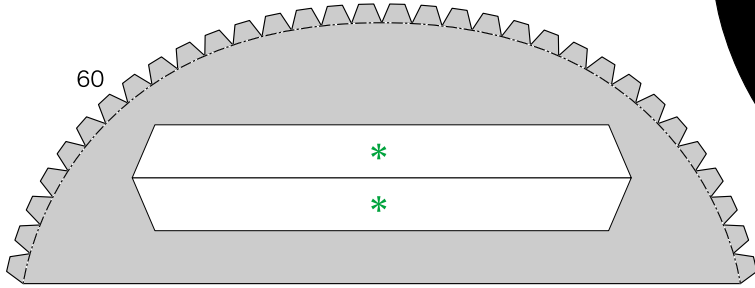
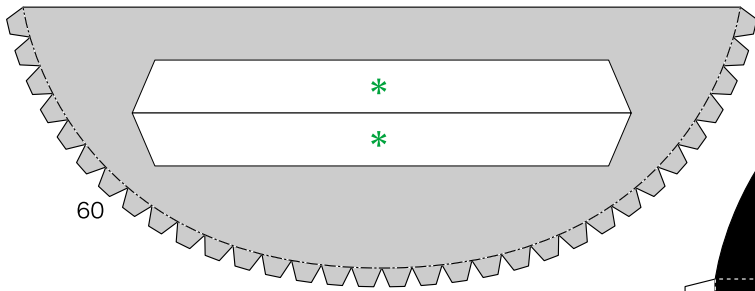


36

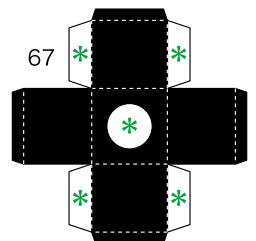
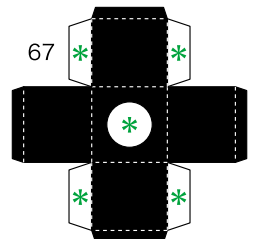
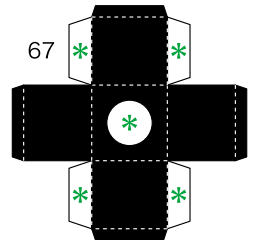
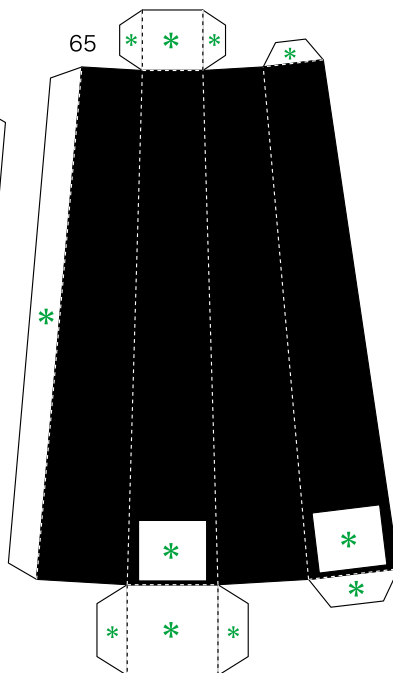
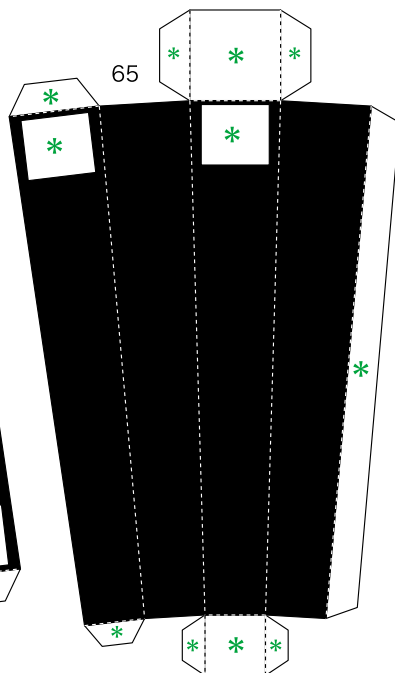
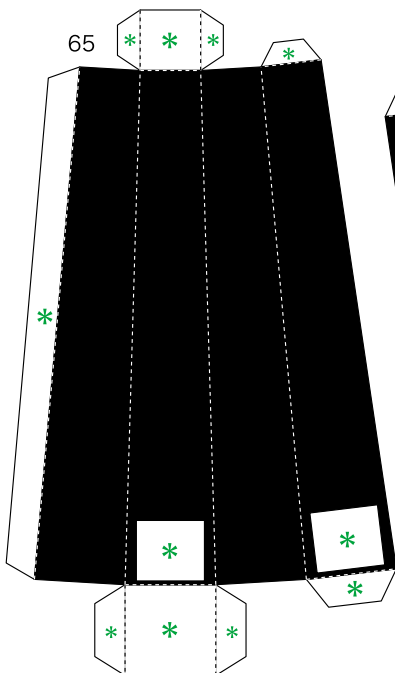
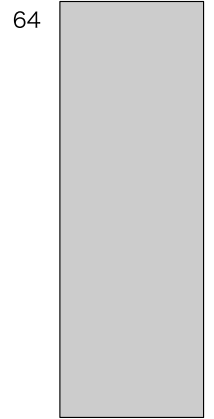
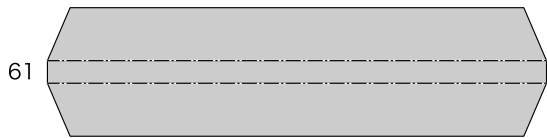
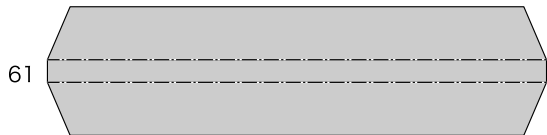
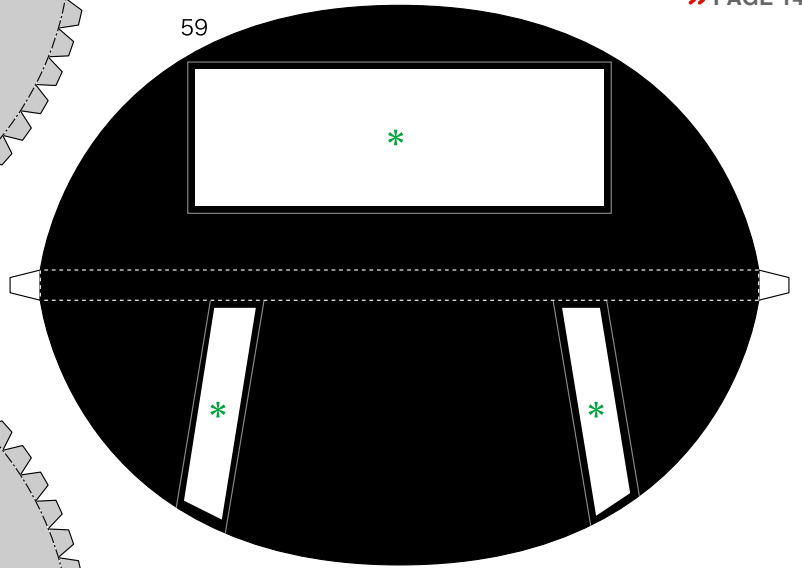


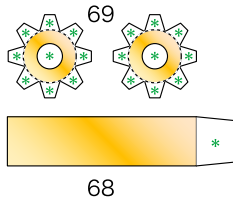
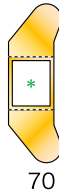
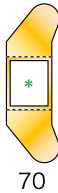
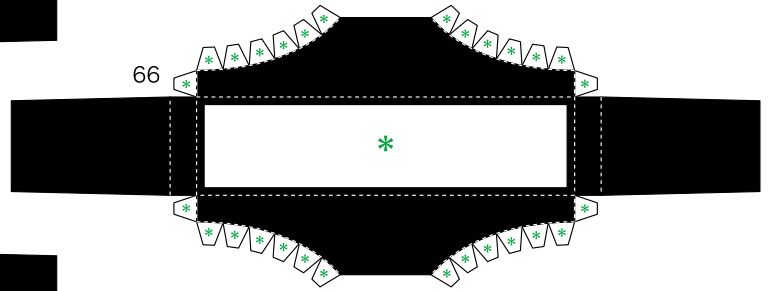
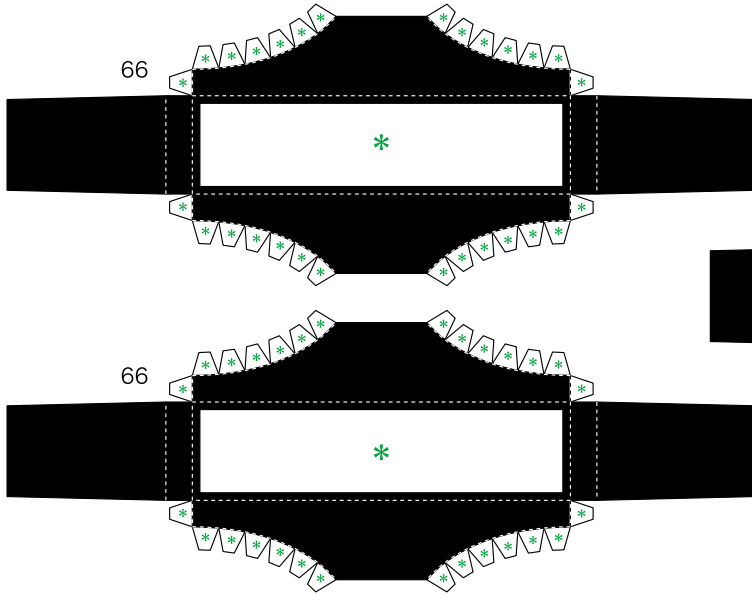
36



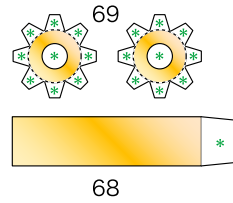


59

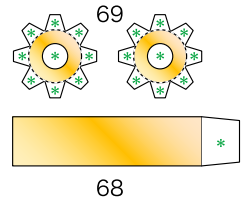




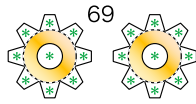
68



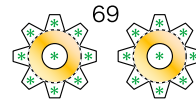
68



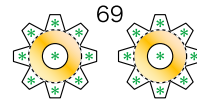
68



69



69



69



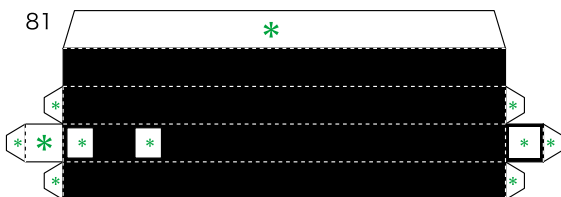
72



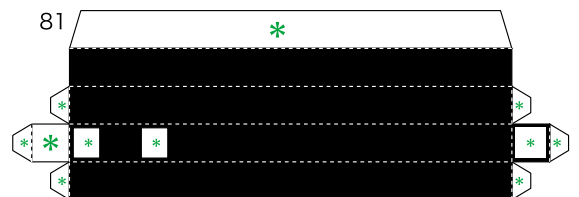
73



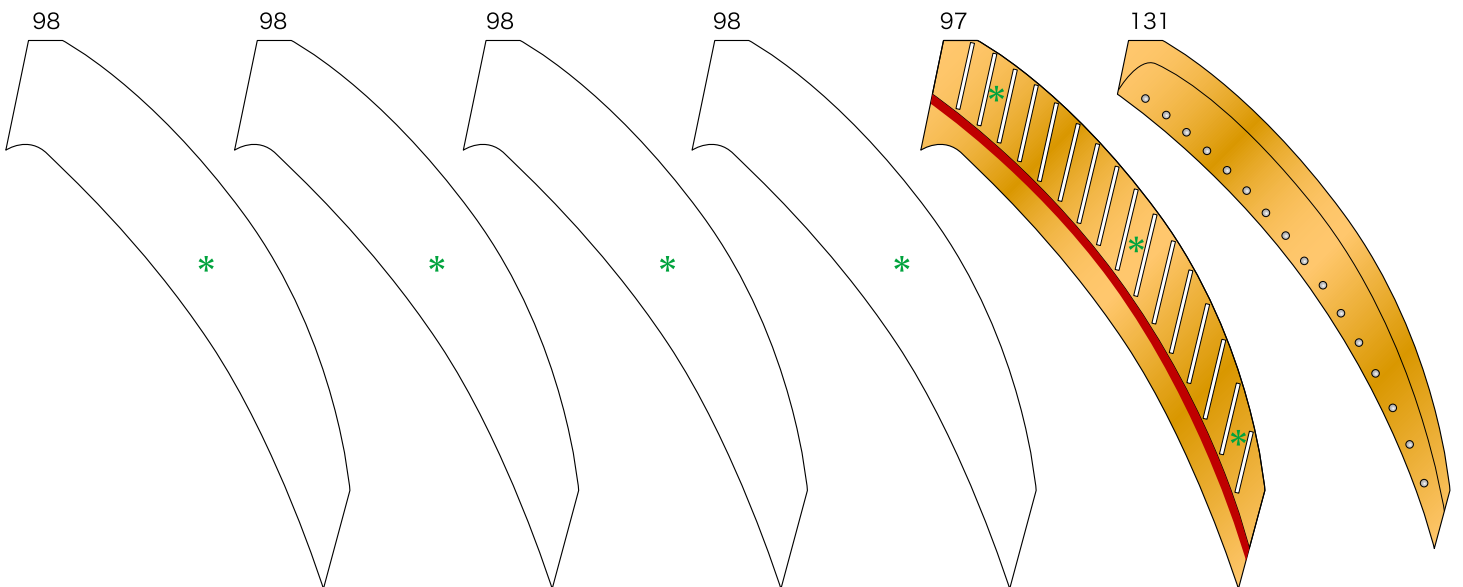
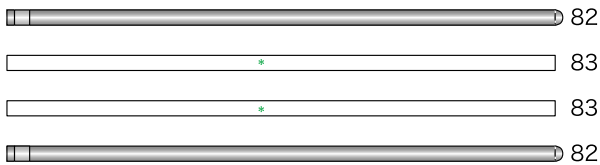
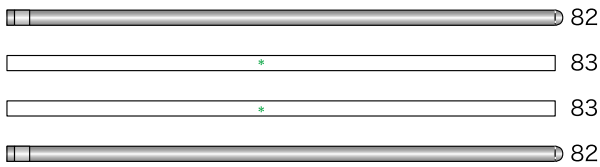
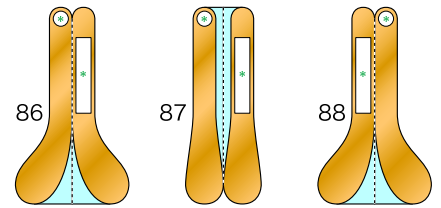
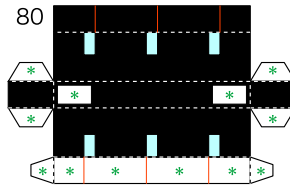
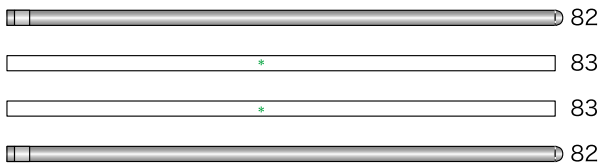
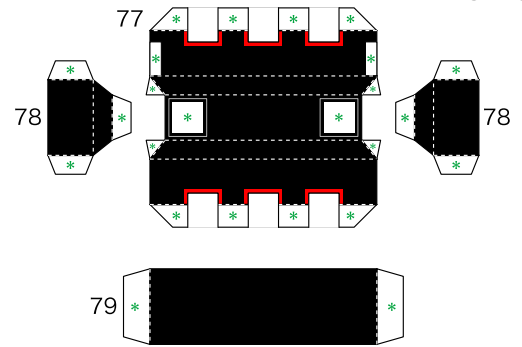
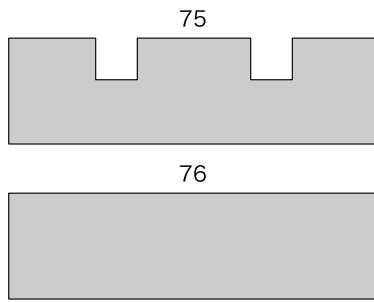
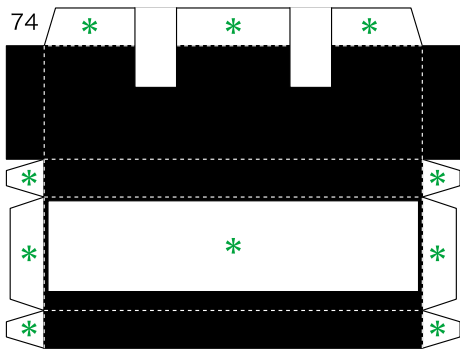
73

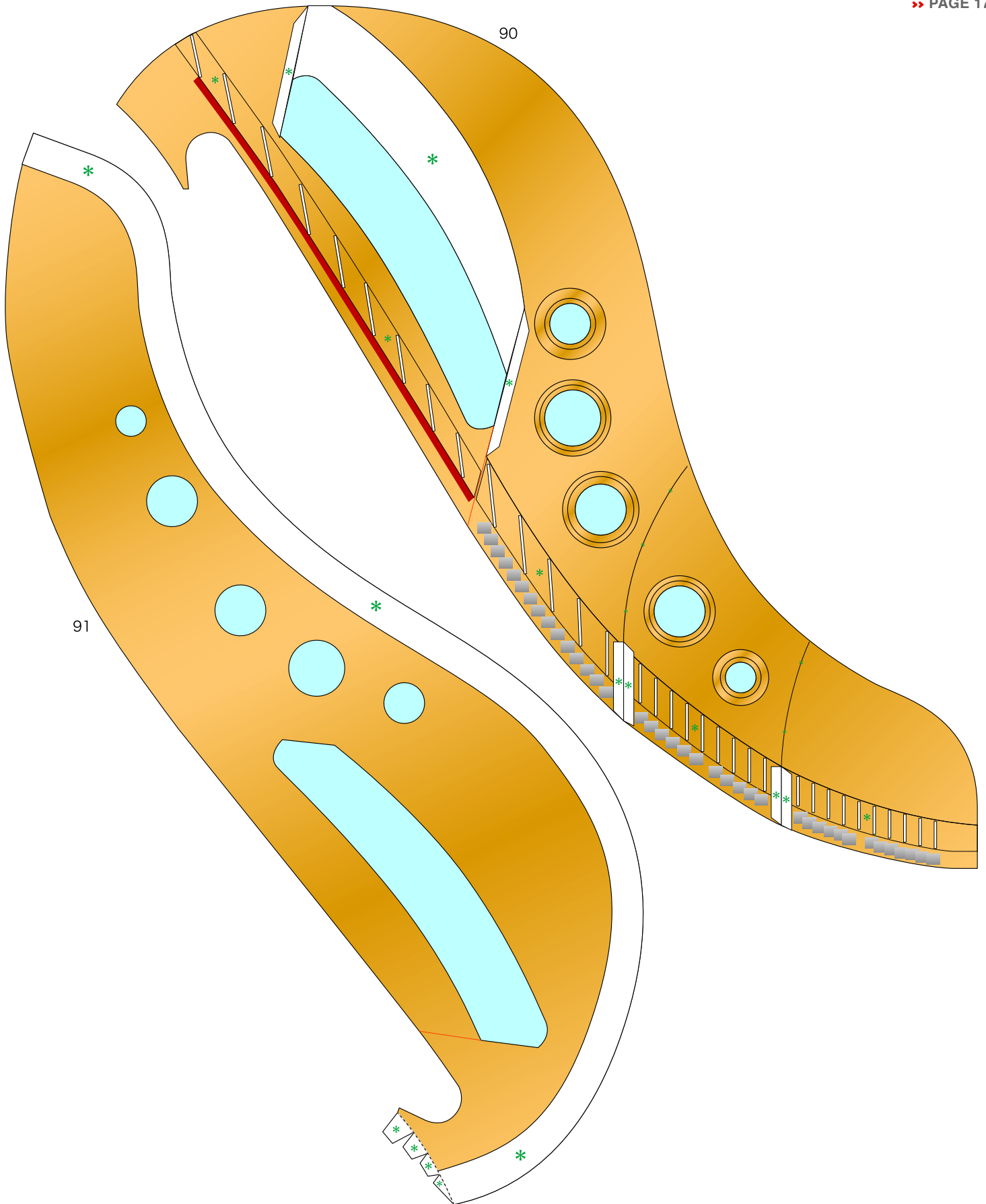


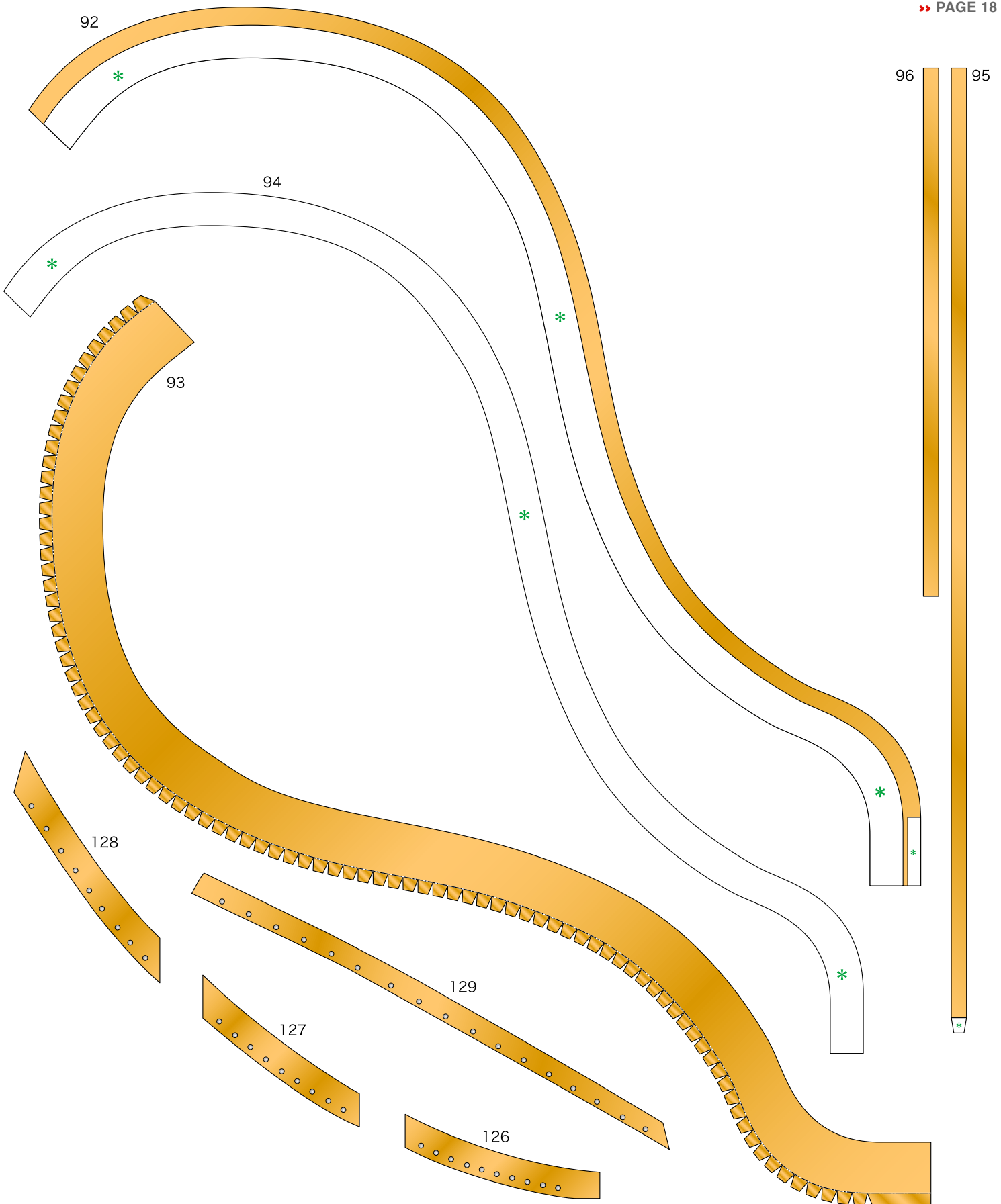
81

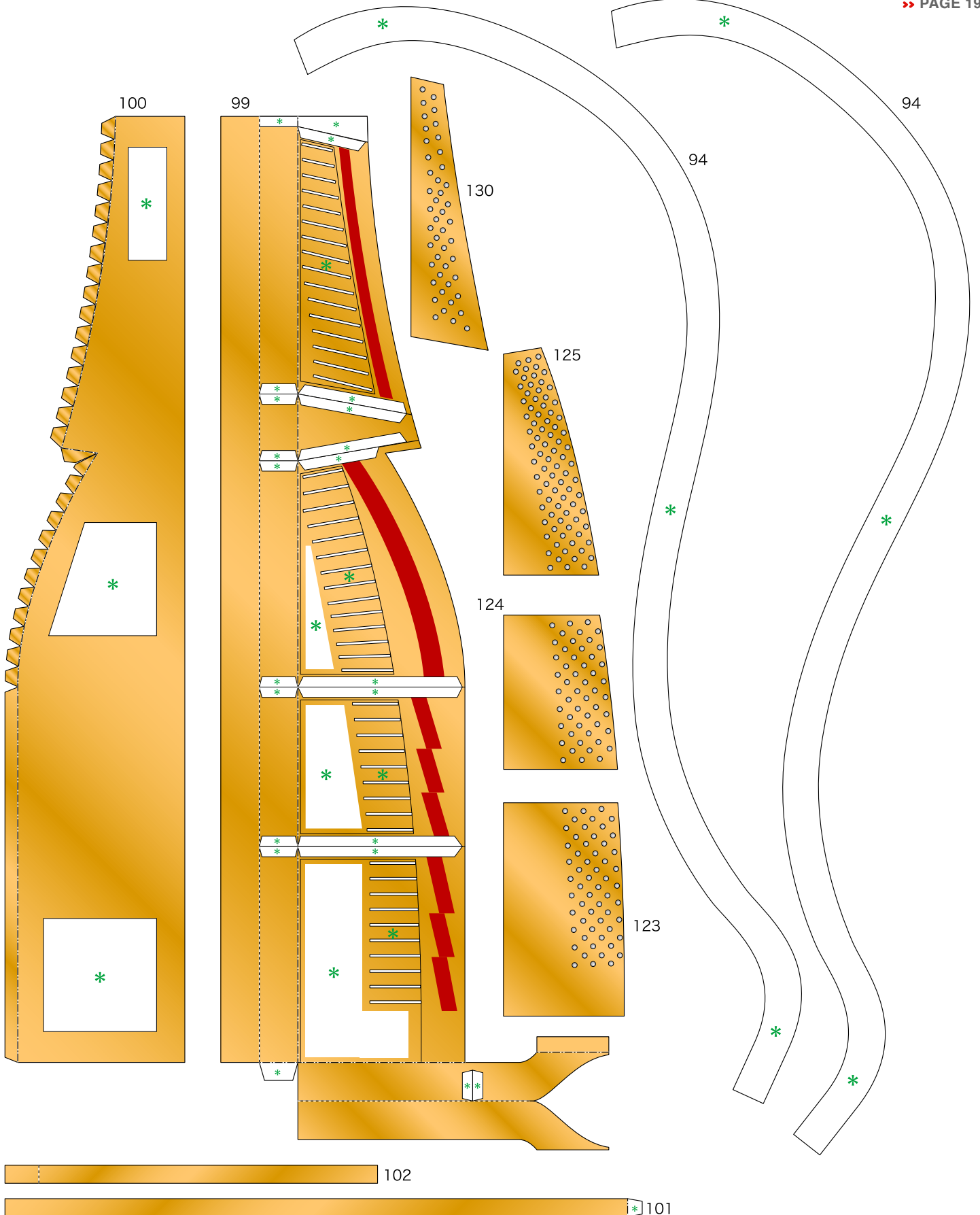


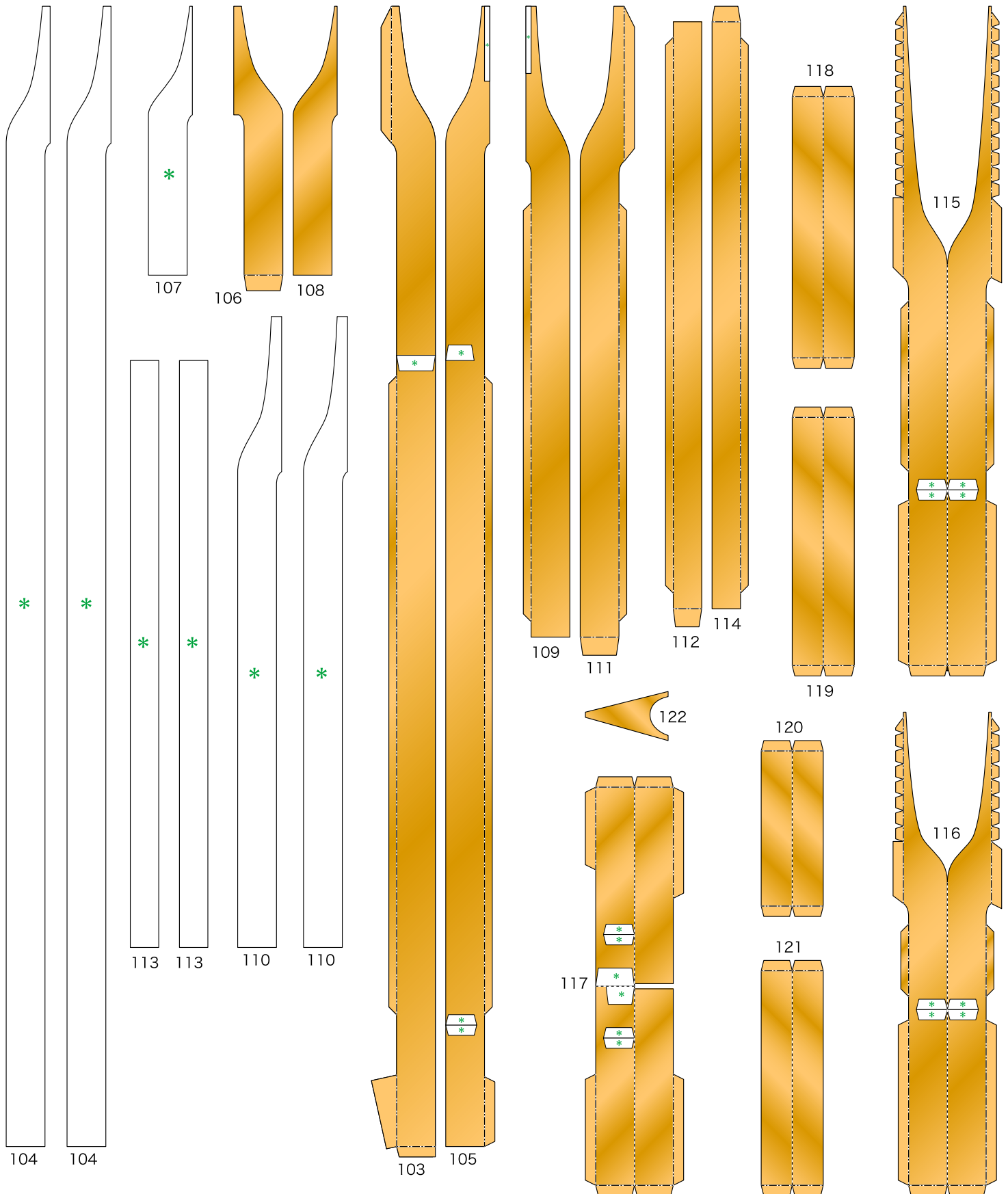
81

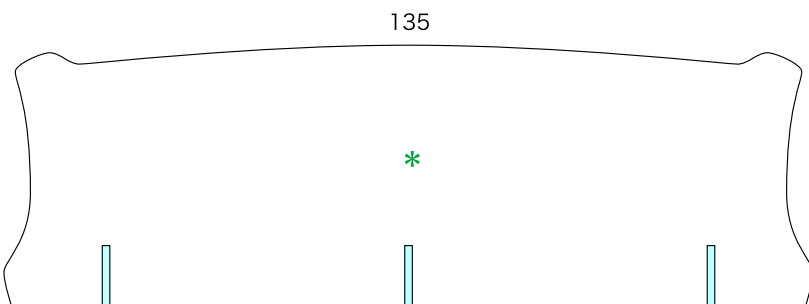
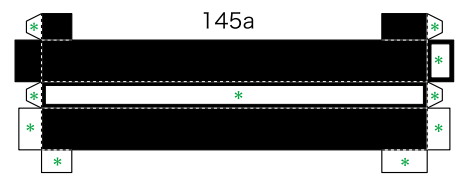
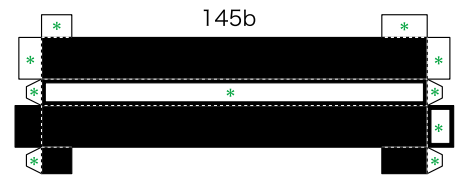
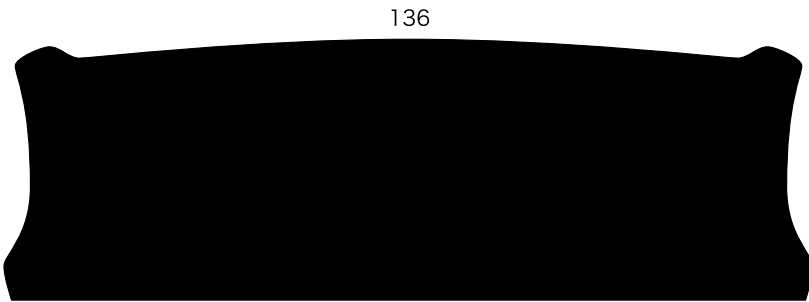
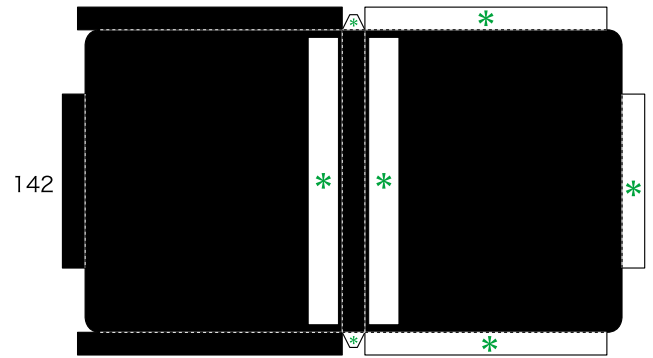
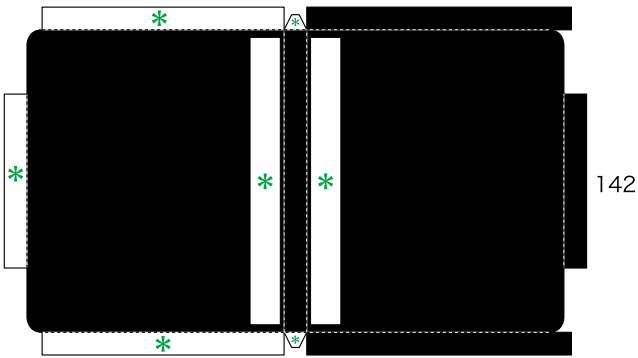
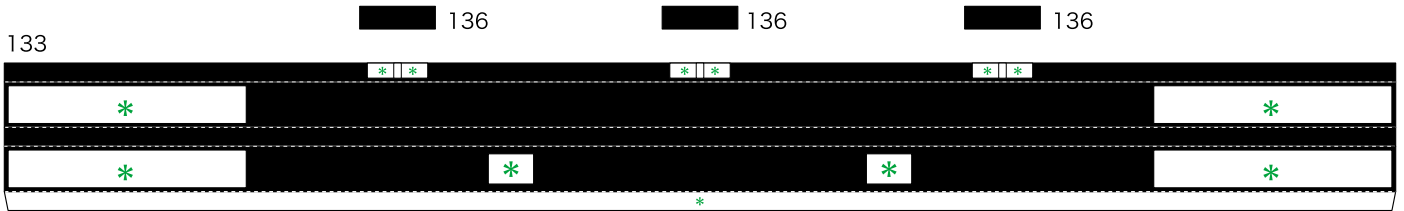
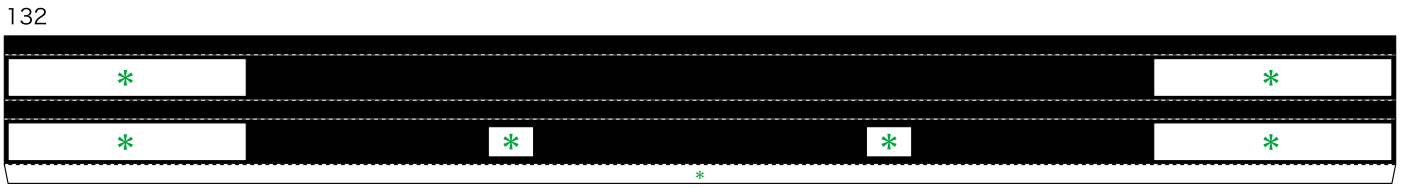




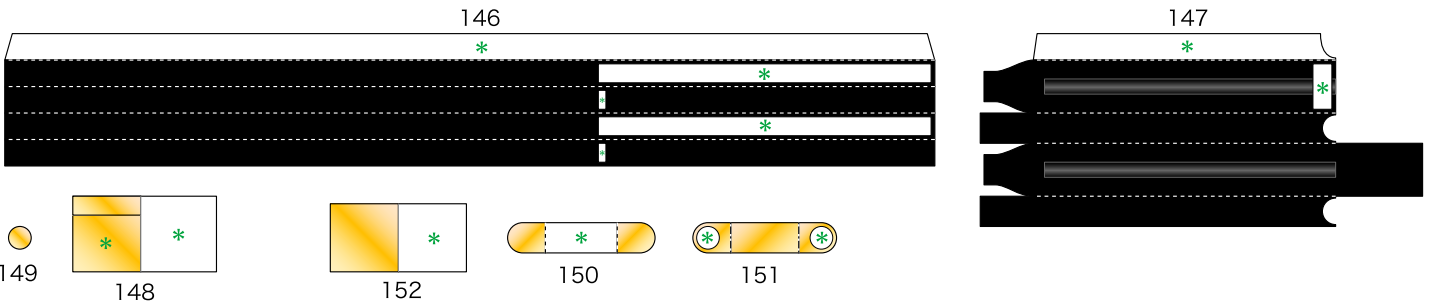
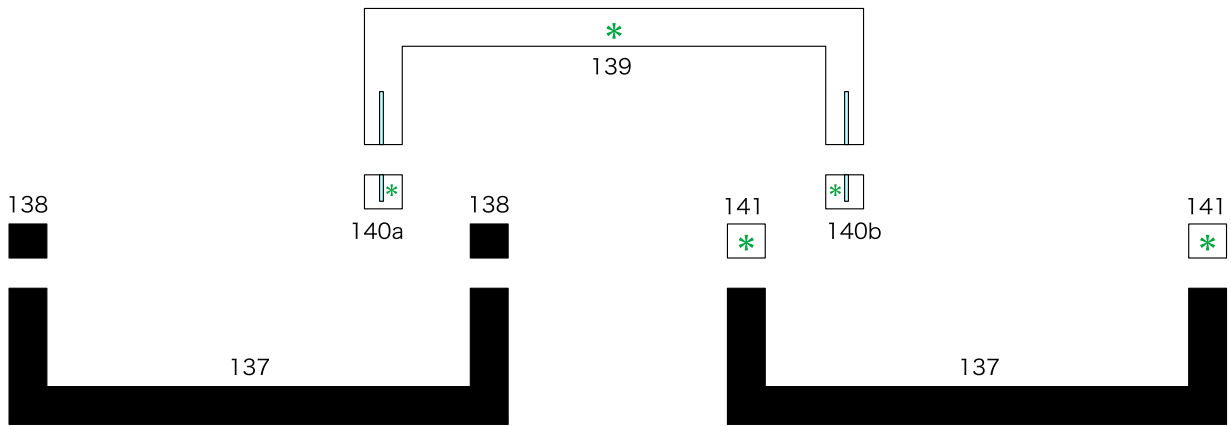
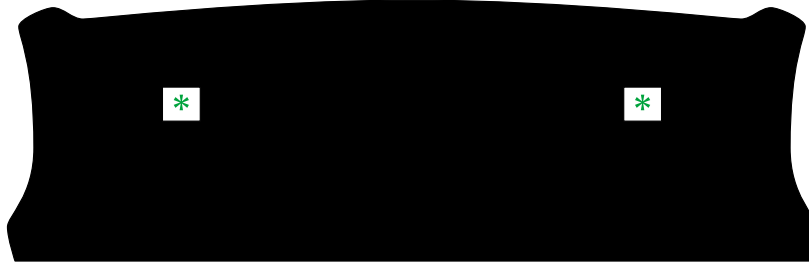








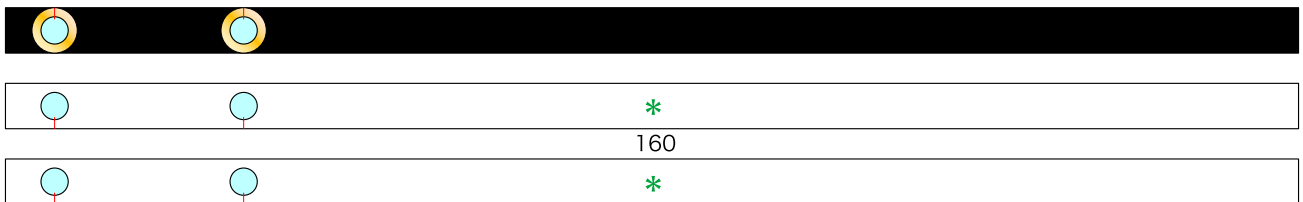
134



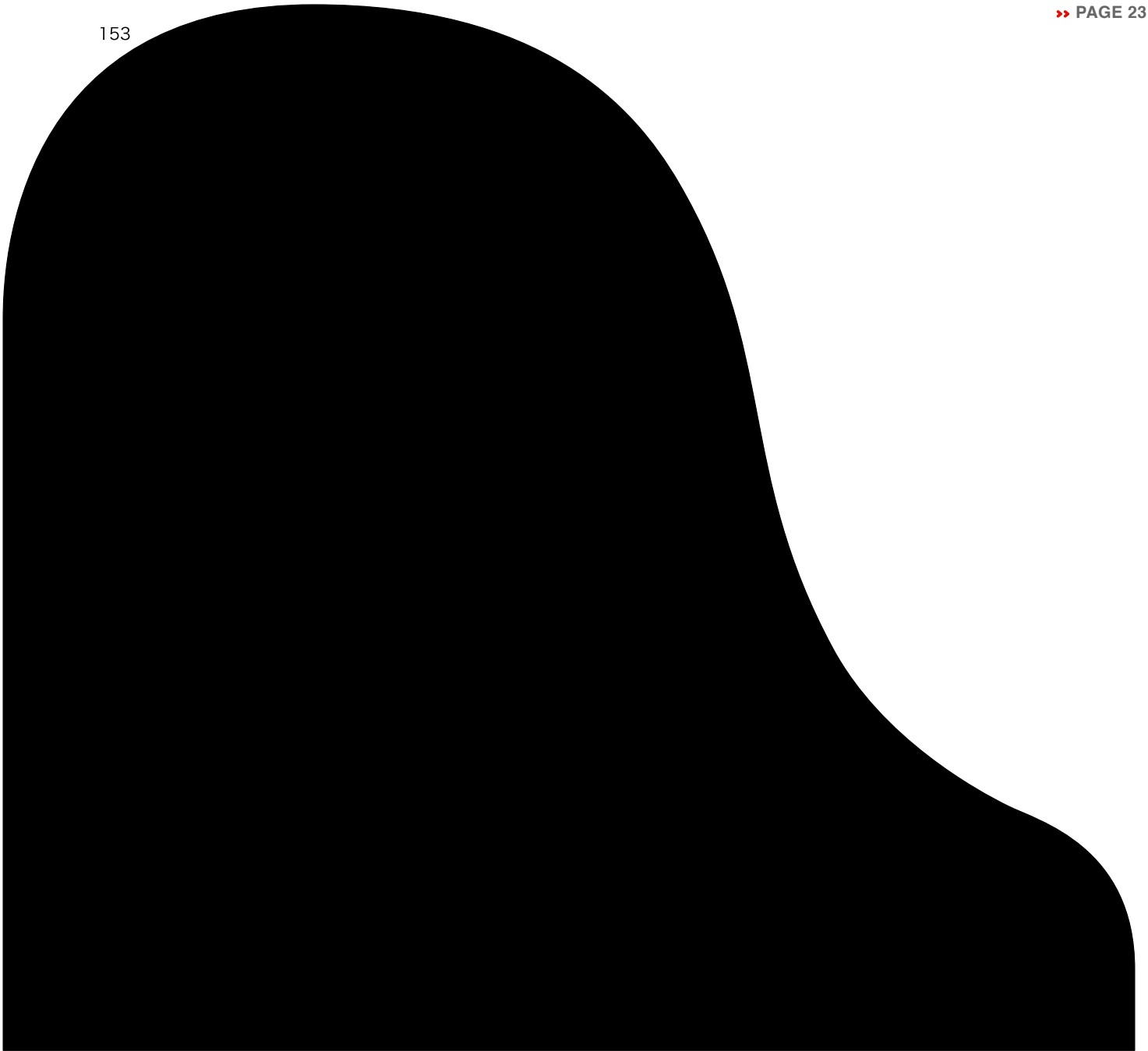
161



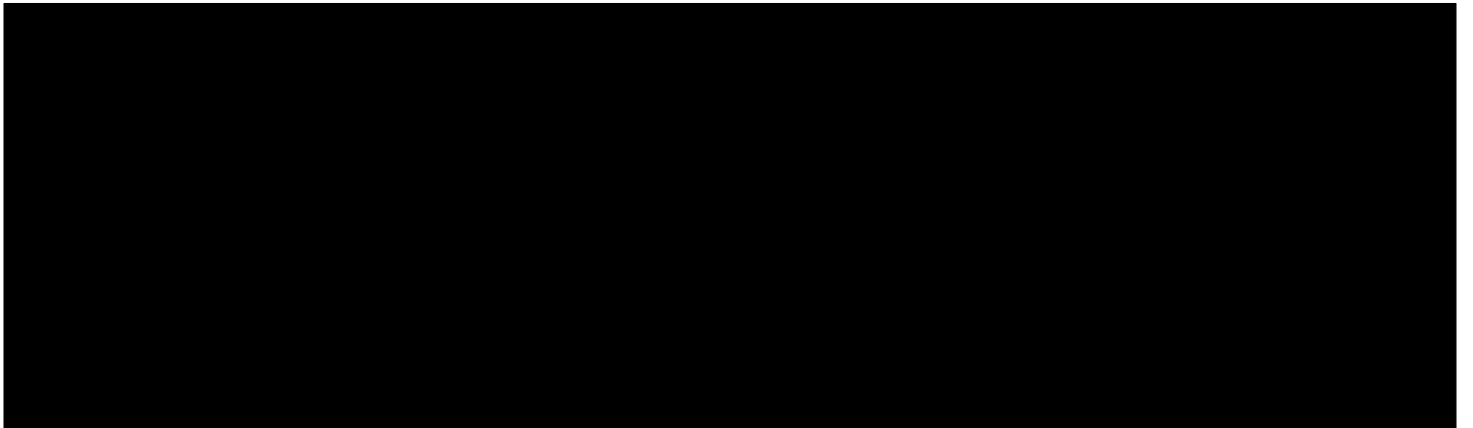
159



153



154



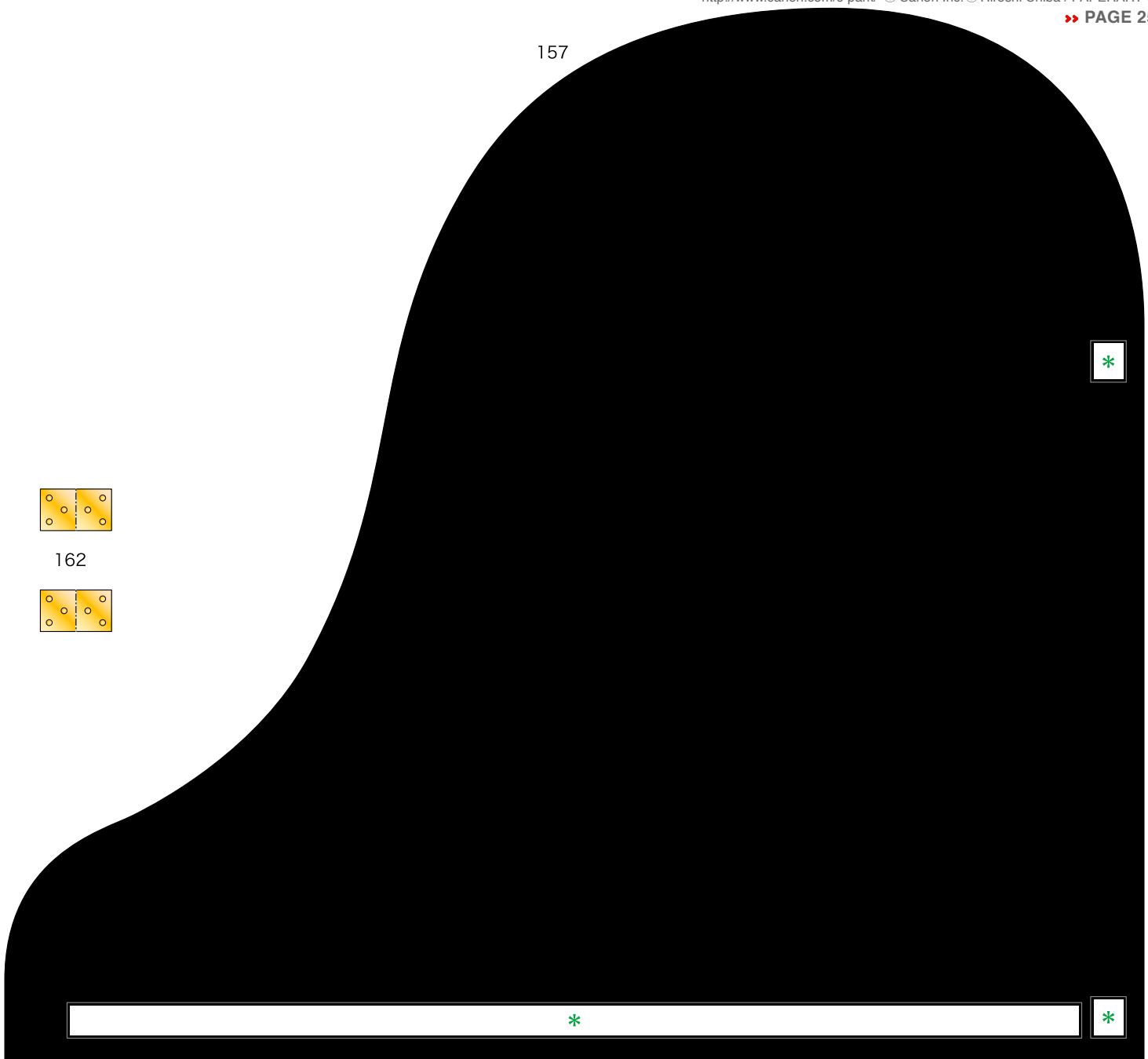
155



156



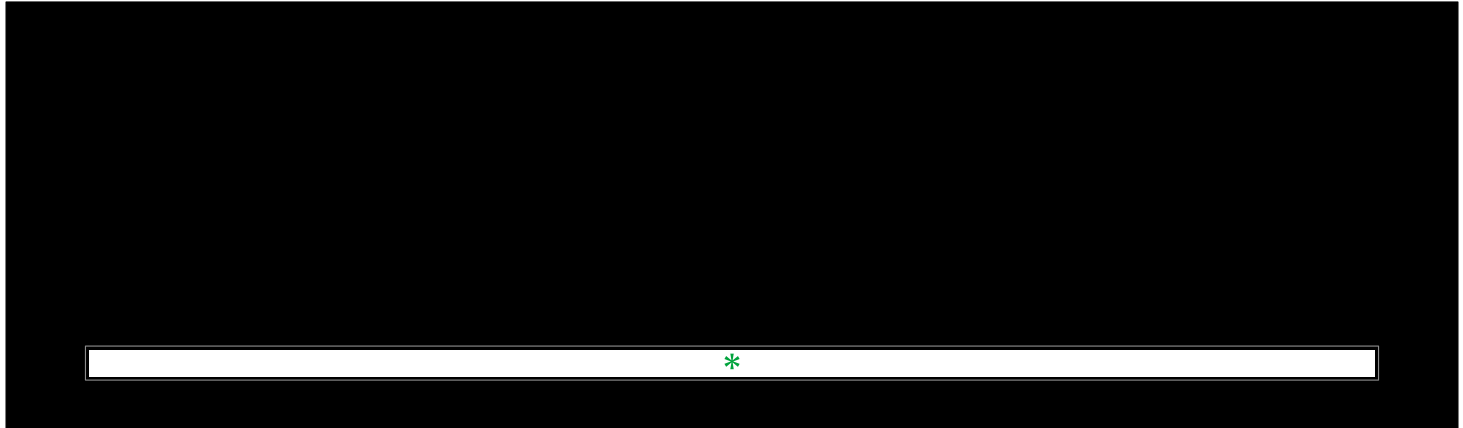
157

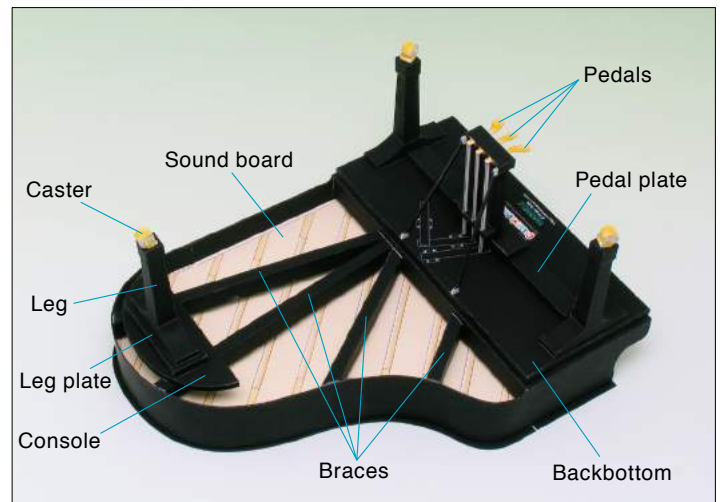
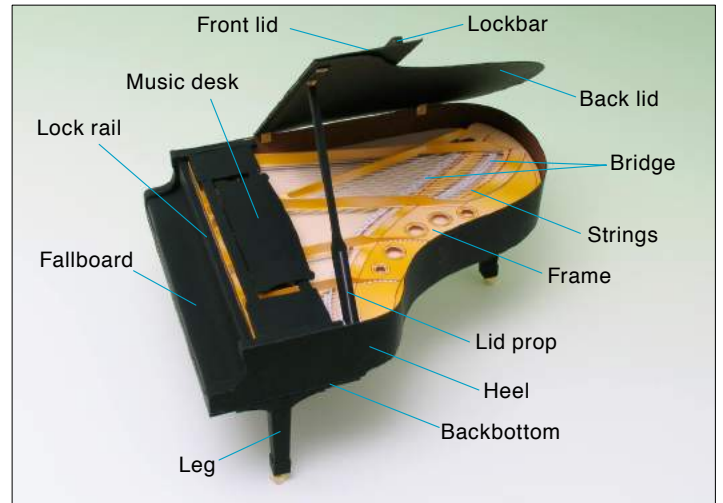


162



158





Grand piano

■ [Assembly Instructions] : Eleven A4 sheets

※ When assembling the parts, be sure to carefully read the "Assembly Instructions" along with the parts sheet.

※ This model was designed for Papercraft and may differ from the original in some respects.

※ Black and yellow paint has been added to the finished piece in the photo.

Assembly Instructions

- 1: Carefully cut out the parts.
- 2: Make mountain folds and valley folds along the dotted lines, as indicated by the directions.
- 3: Assemble the parts in the order shown by the numbers on the glue tabs.
(Read the assembly instruction for more information.)
- 4: Attach the parts in order.
(Read the assembly instruction for more information.)
- 5: Your Paper craft model is finished.


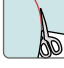



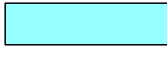

What you need

- Scissors, tweezers, glue** (We recommend craft glue.)
- Glue stick** (used to attach wide surfaces together.)
- Thread** (size 20) (Used to string the piano.)
- Instant adhesive** (Recommended to attach the thread.)

Caution

- Keep glue away from small children.
- Be careful not to cut your fingers when using scissors.
Fold the folding lines before gluing.

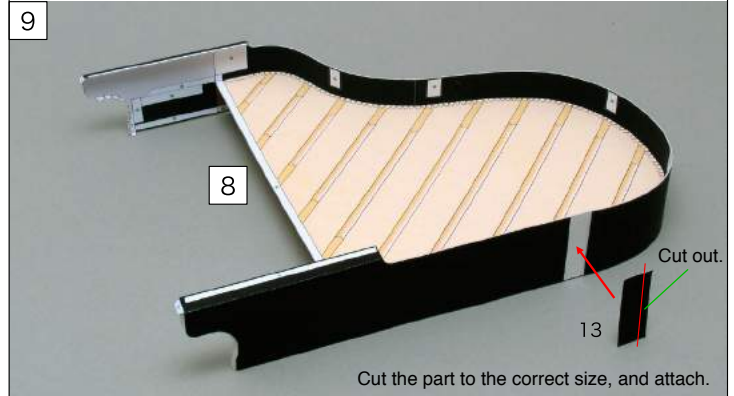
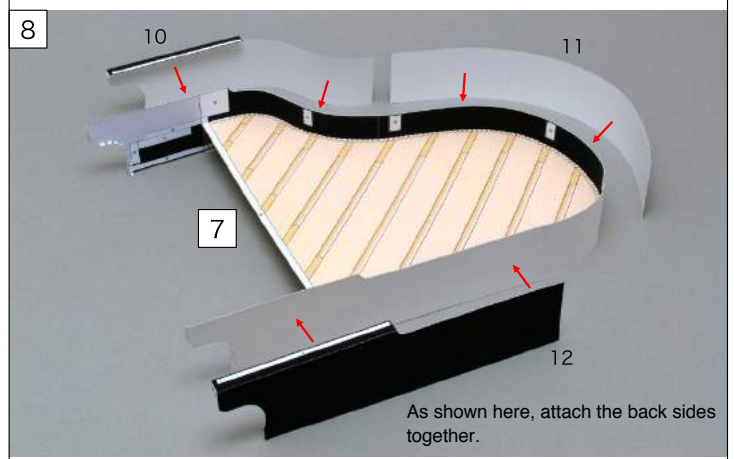
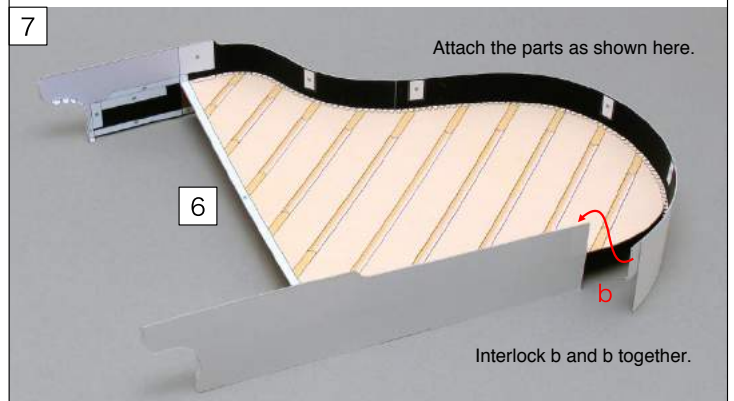
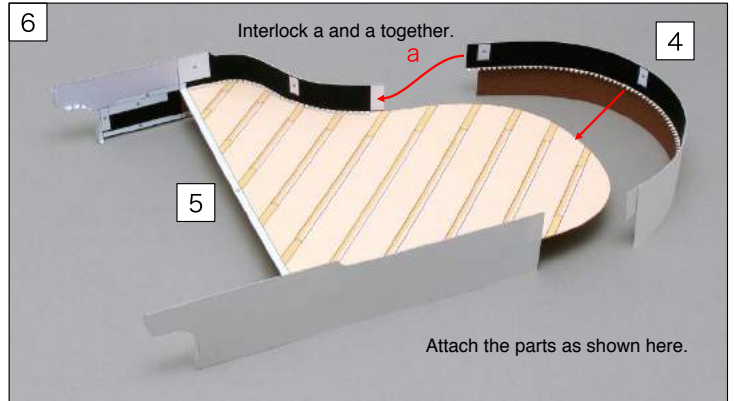
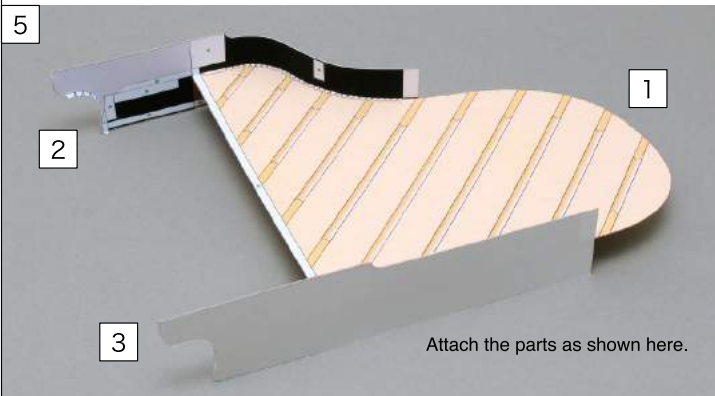
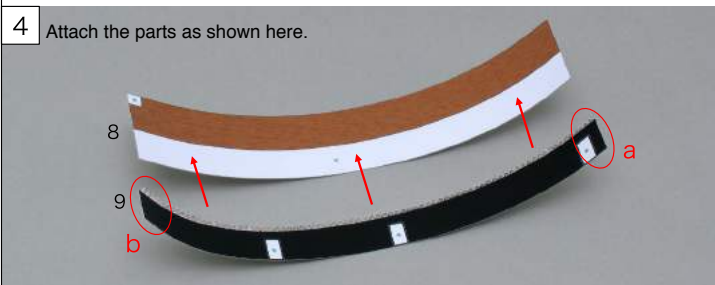
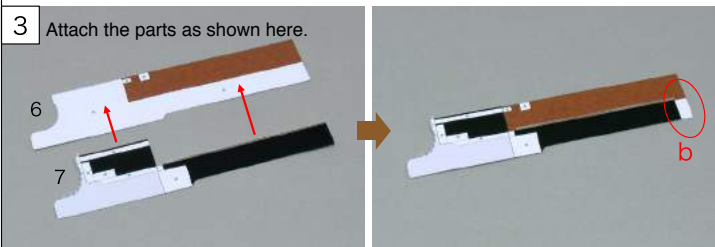
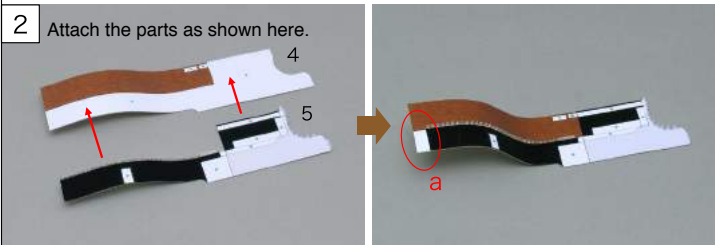
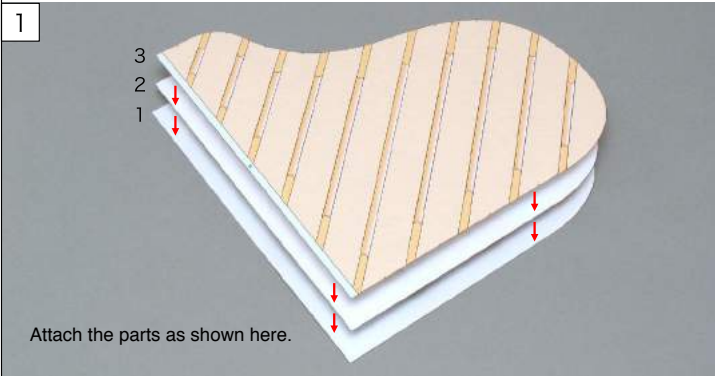
Notation Key

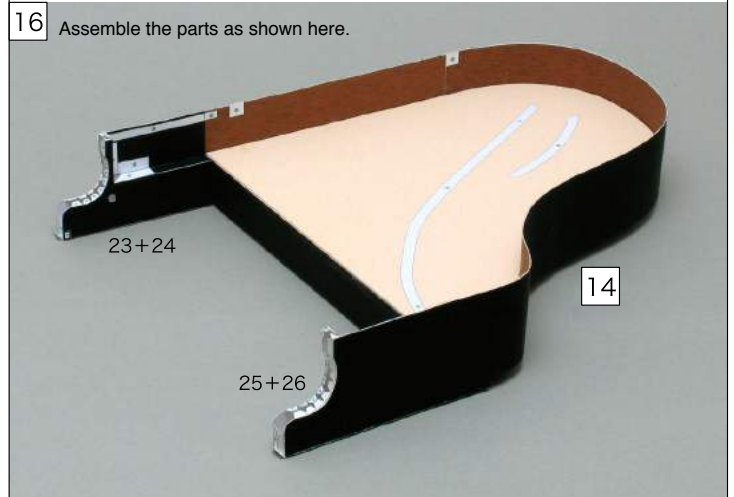
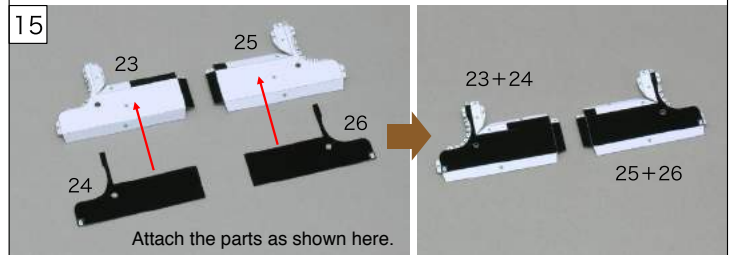
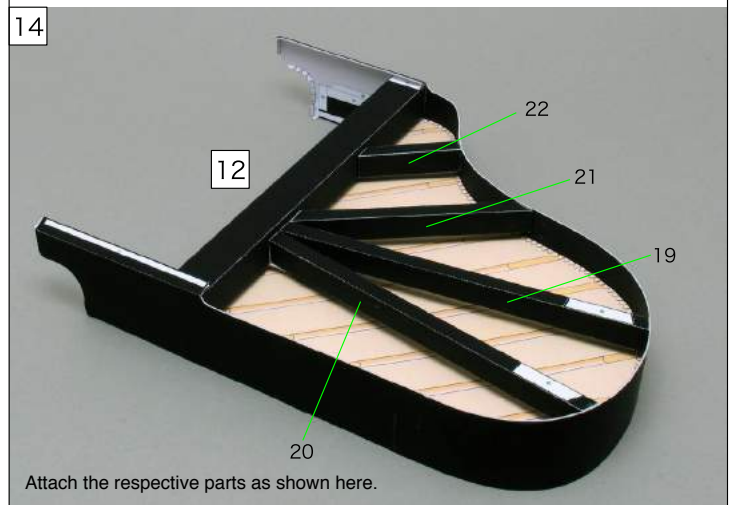
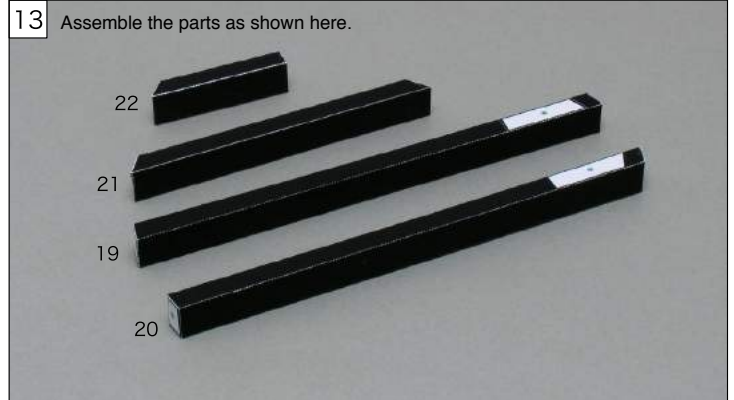
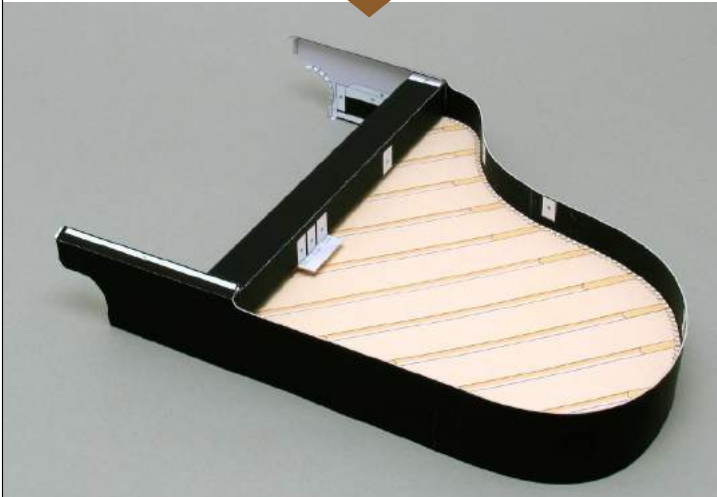
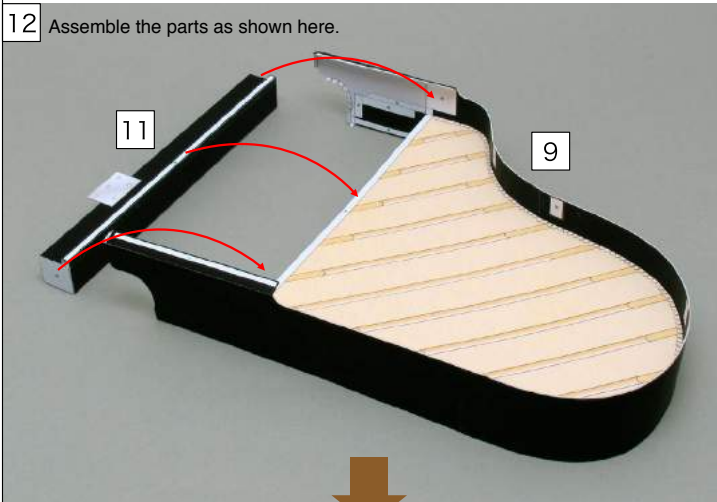
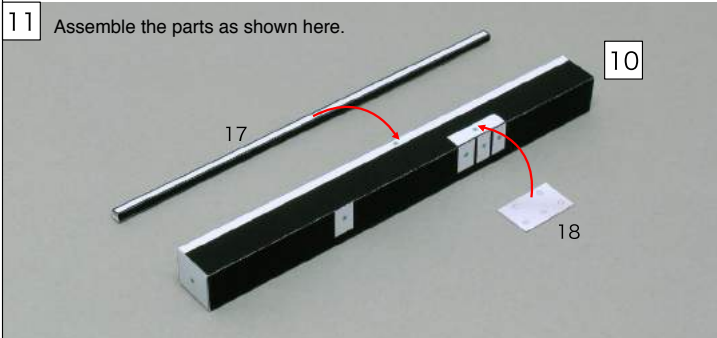
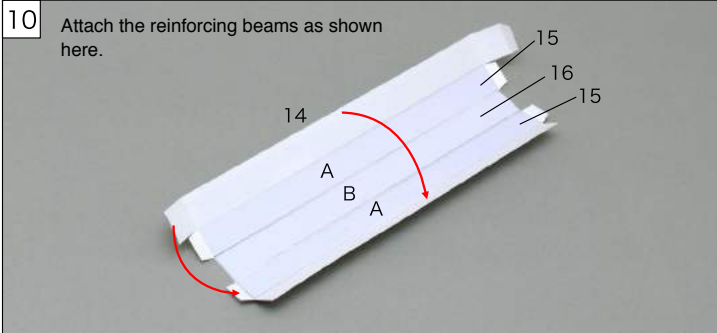
	—————	Scissors line
	—————	Cut in line
	- - - - -	Mountain fold
	- - - - -	Valley fold
		Cut out
	*	Glue spot

★ Handy Hint

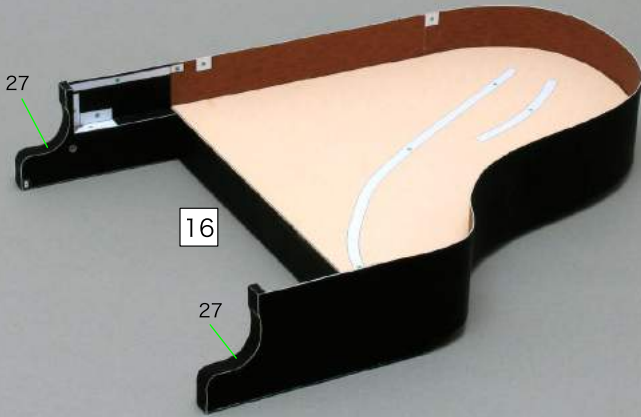
You can give the piano a more "genuine" appearance if you paint the surface after cutting out the black and yellow parts.

A Making the grand piano's body.

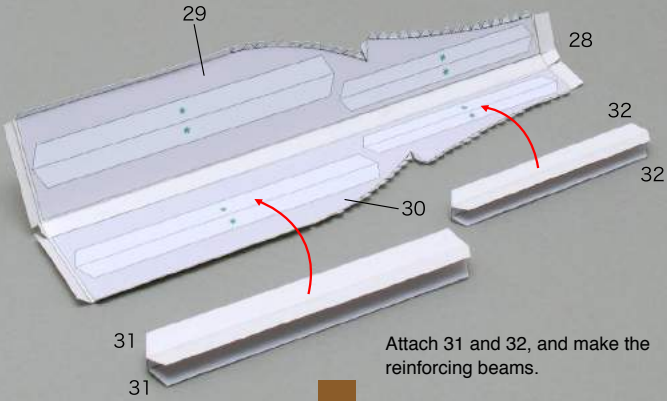




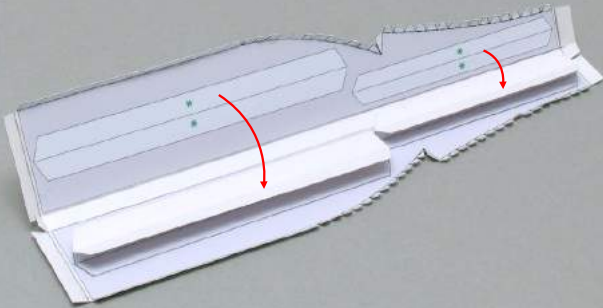
17 Attach the parts as shown here.



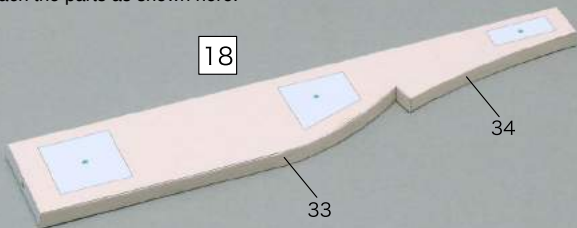
18 After gluing 28 and 29 together, attach the reinforcing beams as shown.



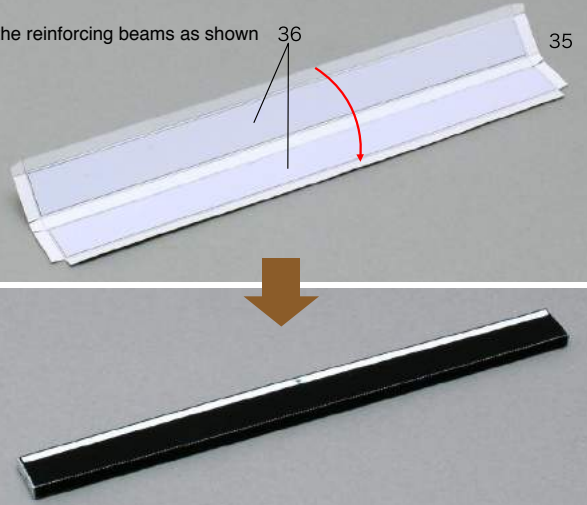
Attach 31 and 32, and make the reinforcing beams.



19 Attach the parts as shown here.

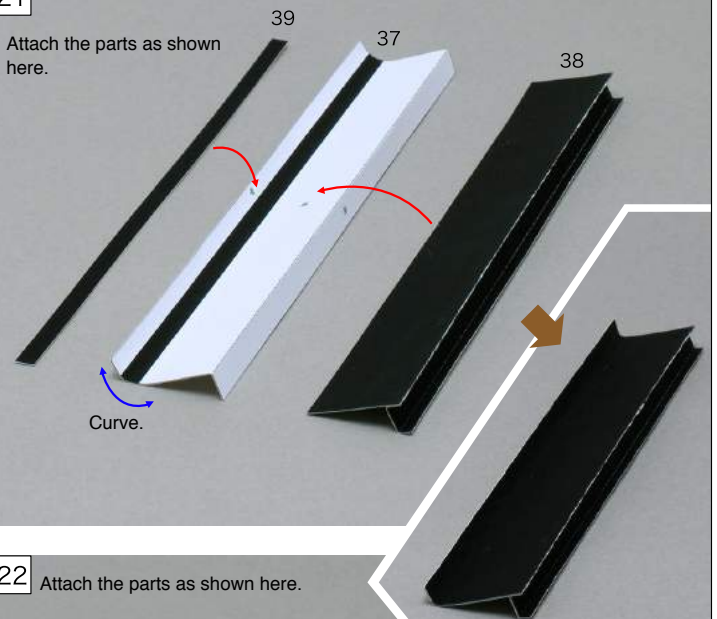


20 Attach the reinforcing beams as shown here.

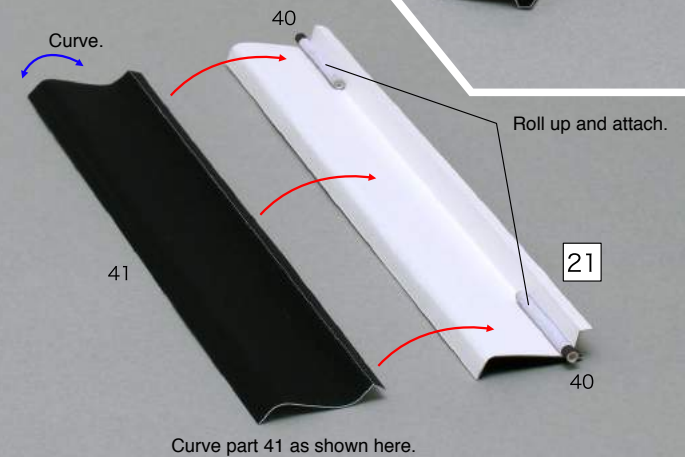


B Making the fallboard.

21 Attach the parts as shown here.



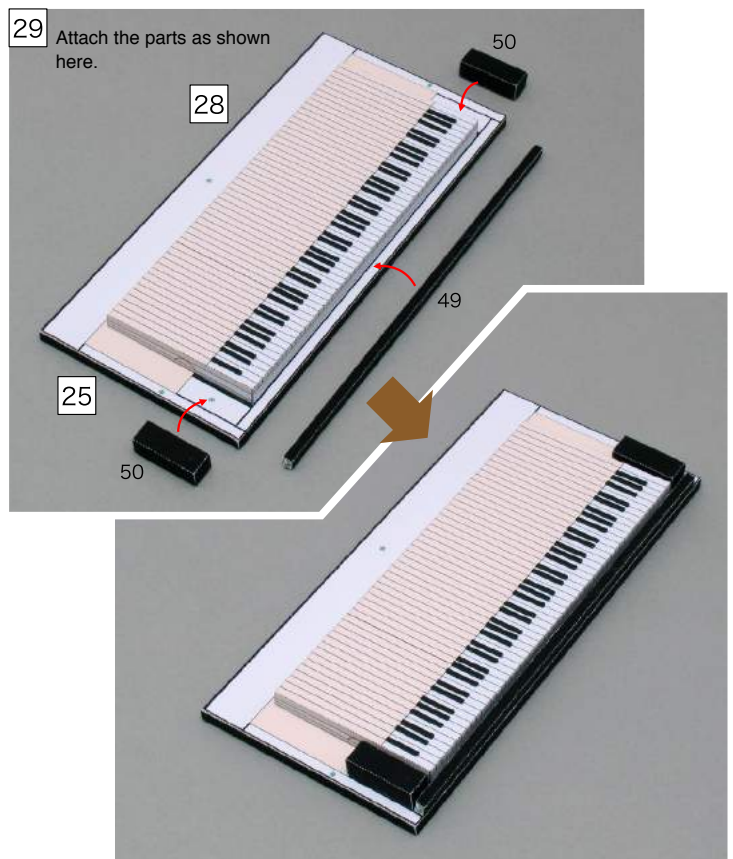
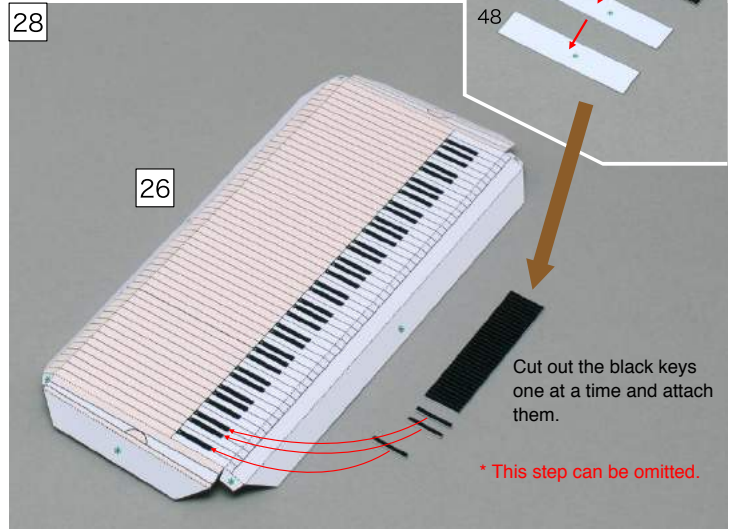
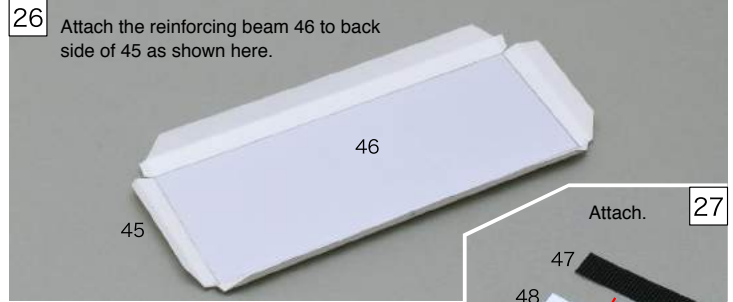
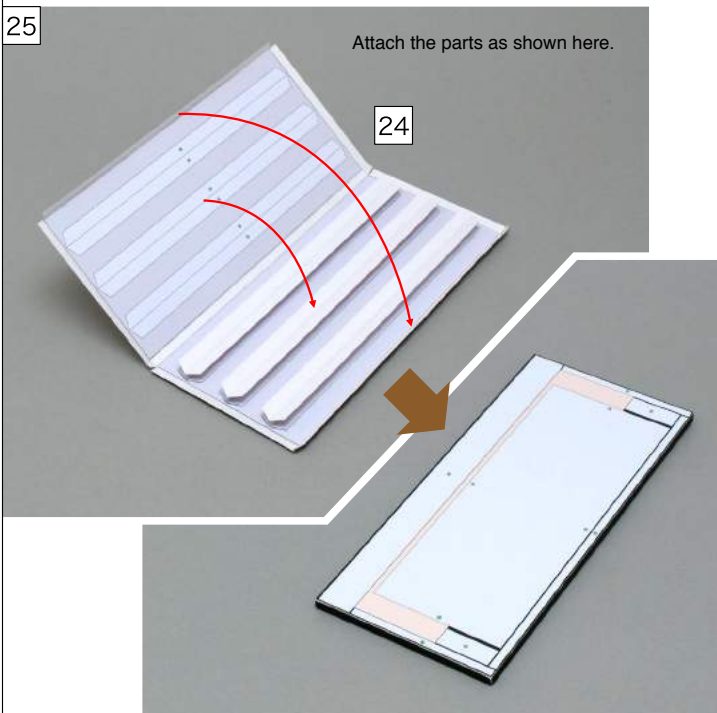
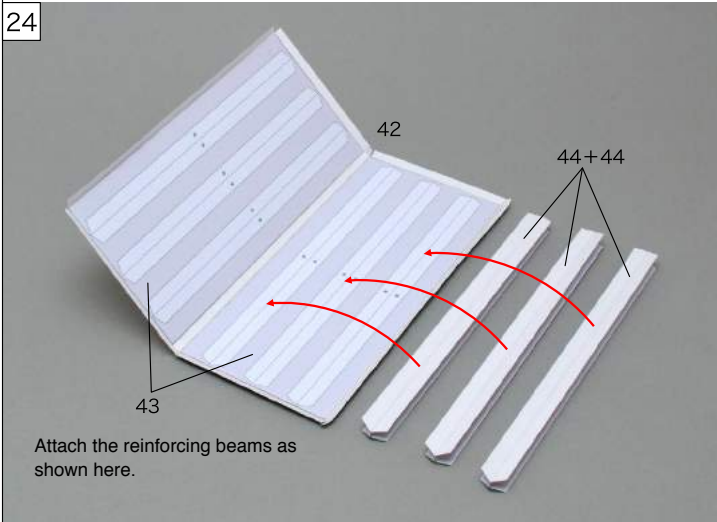
22 Attach the parts as shown here.



Curve part 41 as shown here.

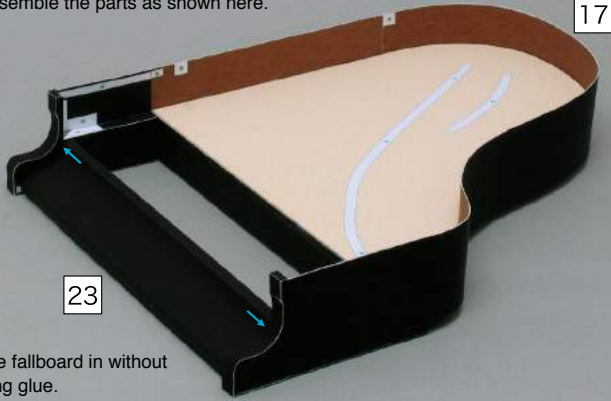


C Making the backbottom and keys.



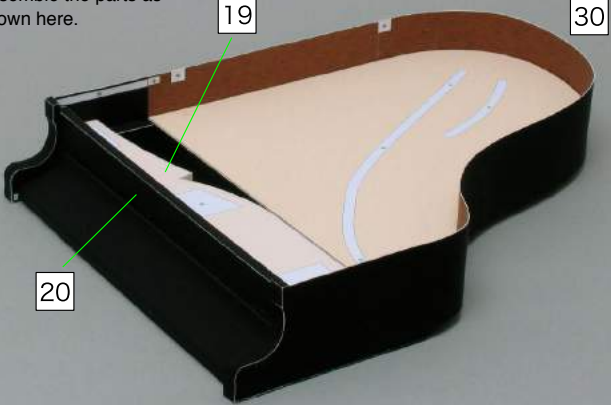
D Put the parts together to assemble the body.

30 Assemble the parts as shown here.

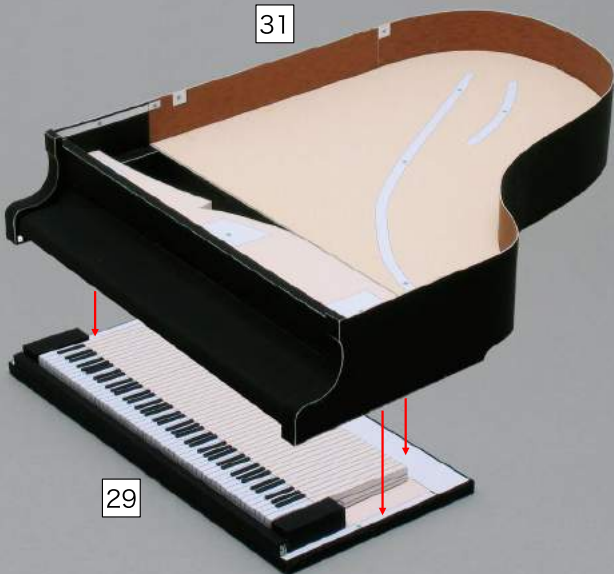


Slot the fallboard in without applying glue.

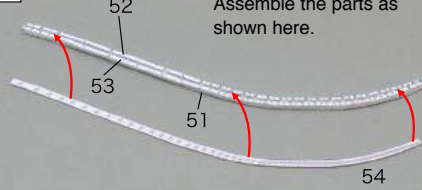
31 Assemble the parts as shown here.



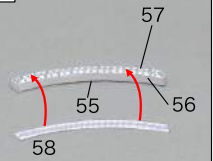
32 Assemble the parts as shown here.



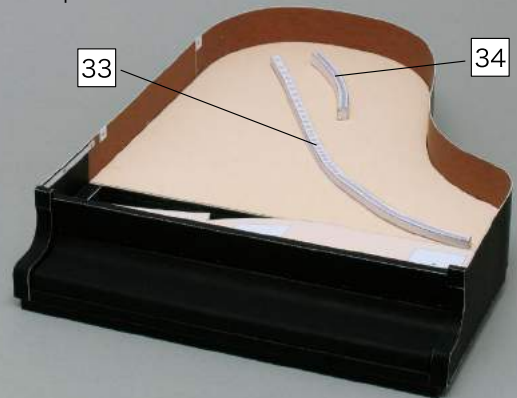
33 Assemble the parts as shown here.



34 Assemble the parts as shown here.

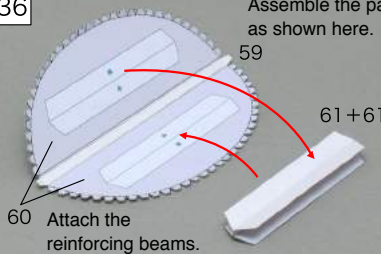


35 Assemble the parts as shown here.

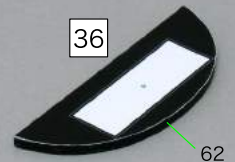


E Making the console and legs.

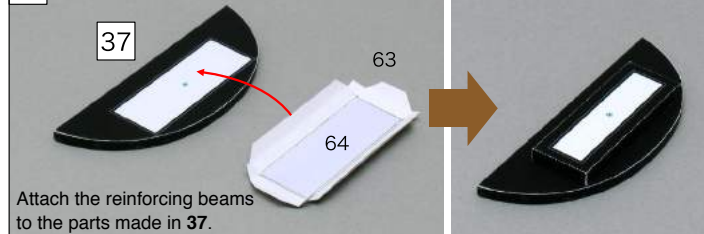
36 Assemble the parts as shown here.



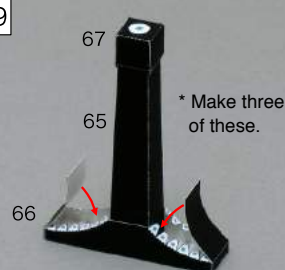
37 Attach 62 to the parts made in 36.



38 Assemble the parts as shown here.

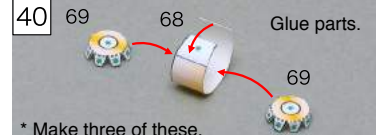


39 Assemble the parts as shown here.



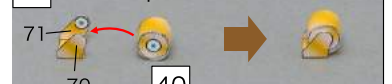
* Make three of these.

40 Glue parts.



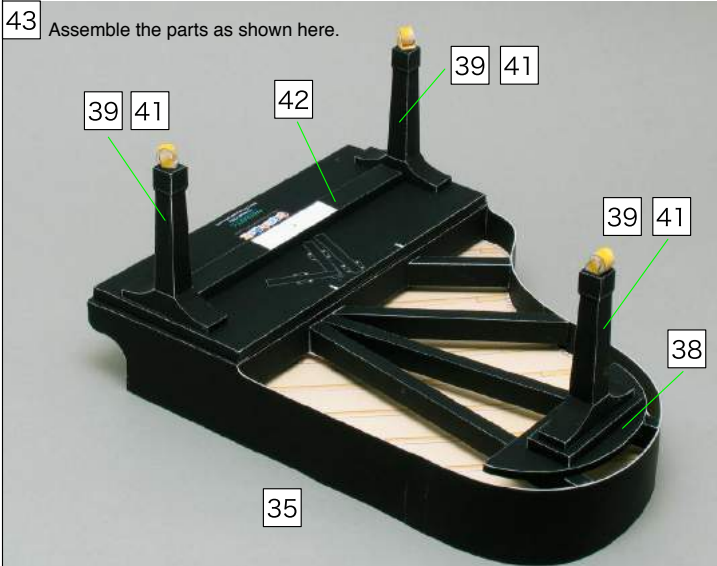
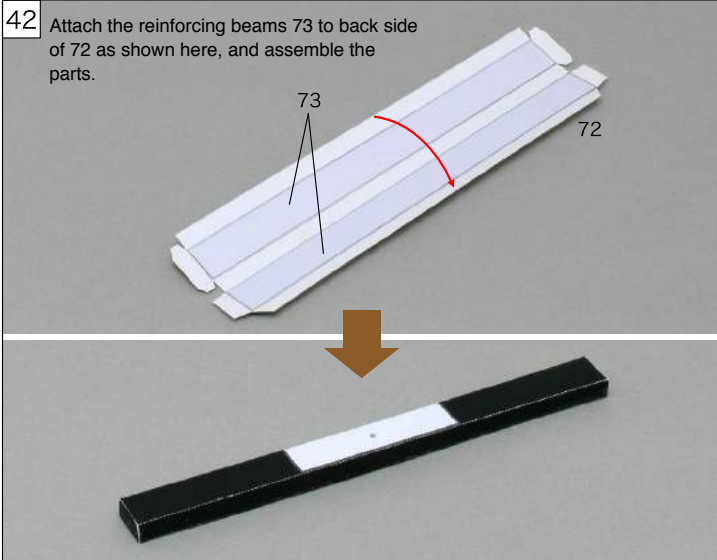
* Make three of these.

41 Attach the parts as shown here.

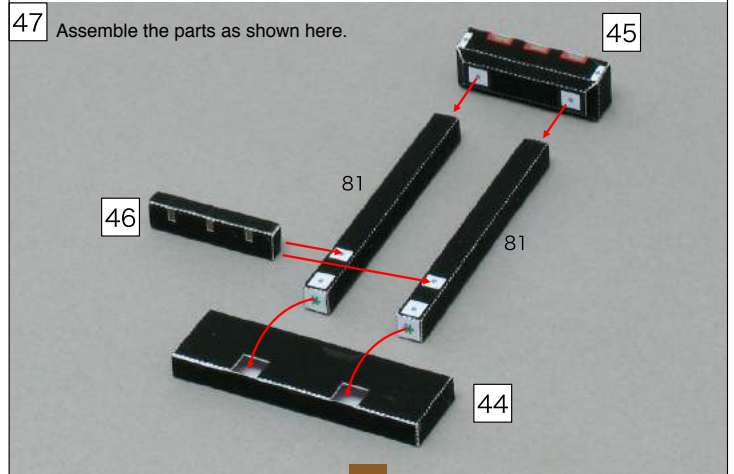
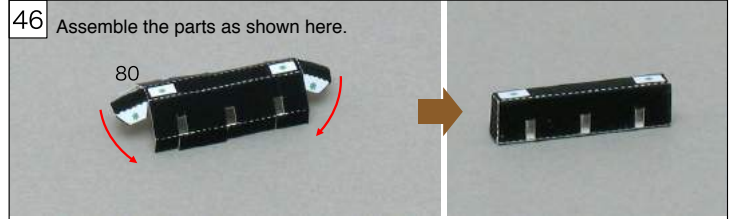
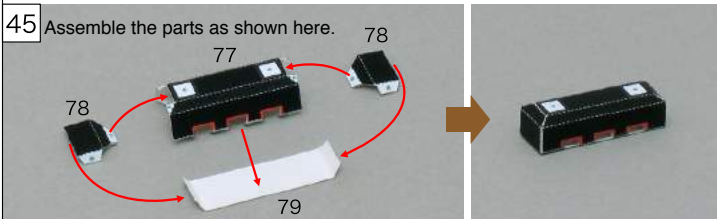
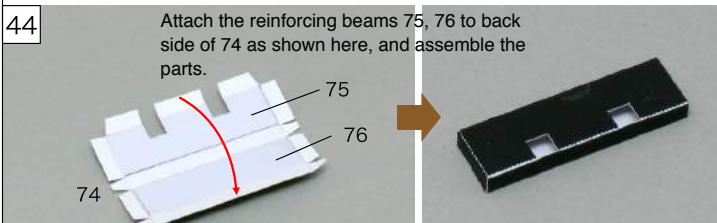


* Make three of these.

Assemble the parts as shown here.



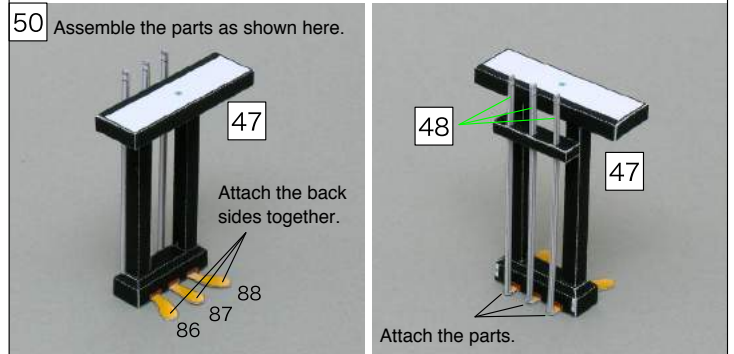
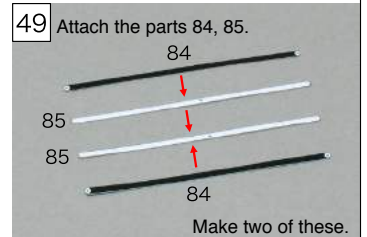
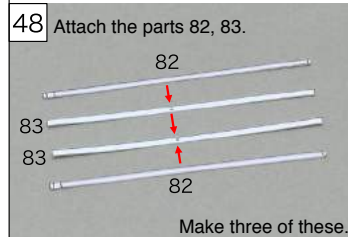
F Making the pedals.



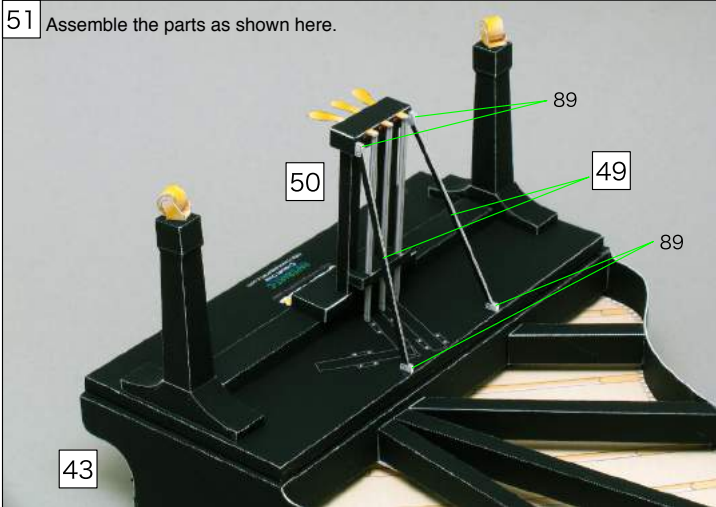
View from above.



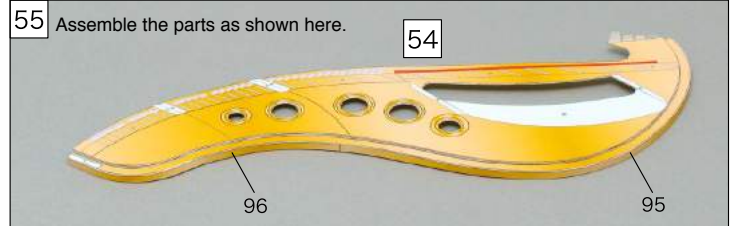
View from underneath.



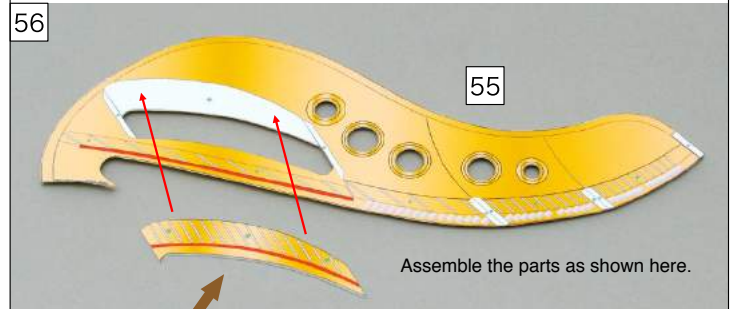
51 Assemble the parts as shown here.



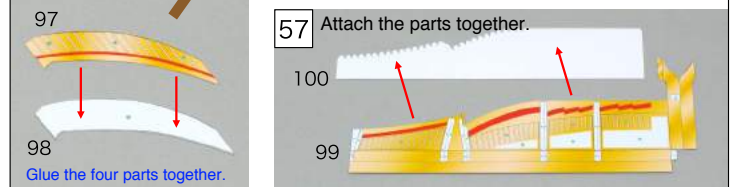
55 Assemble the parts as shown here.



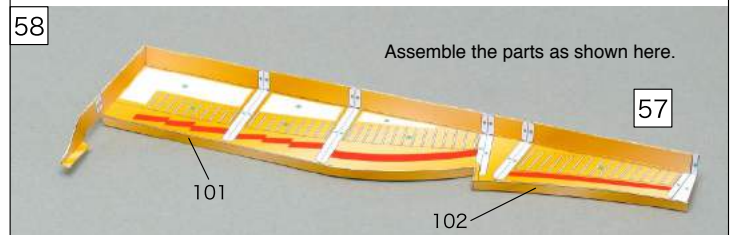
56



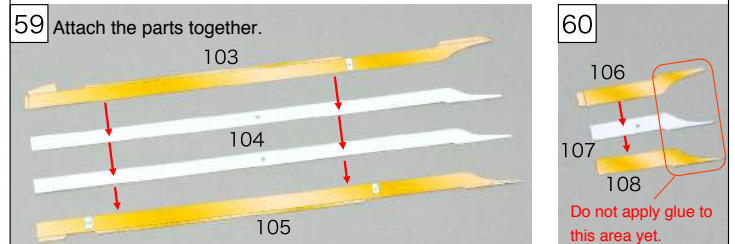
57



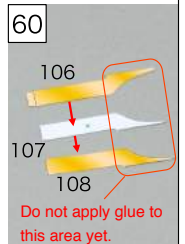
58



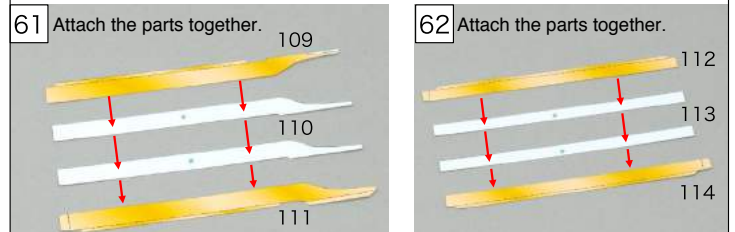
59



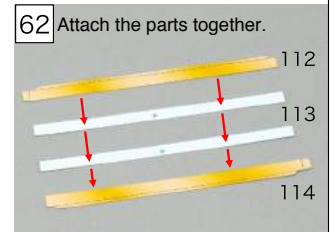
60



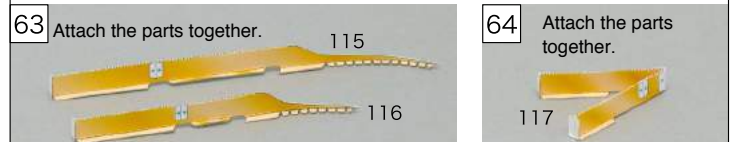
61



62



63

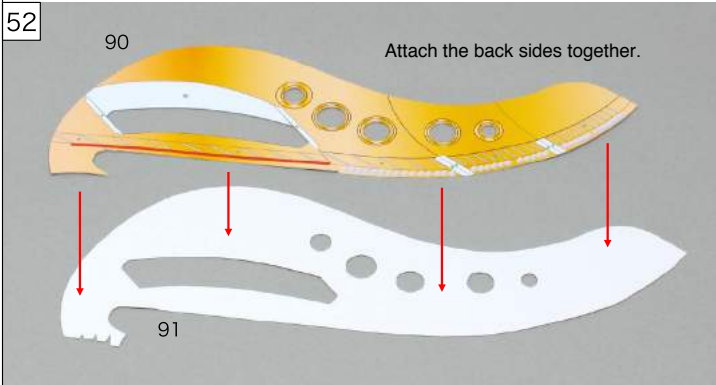


64

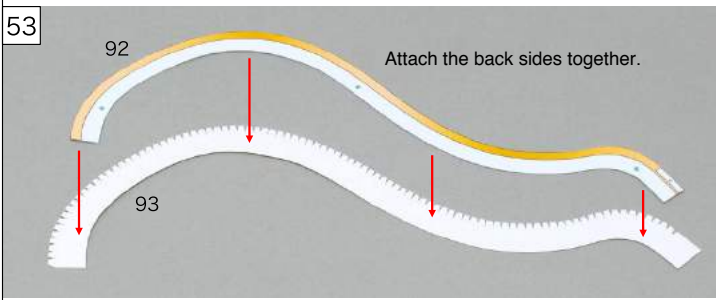


G Making the frame.

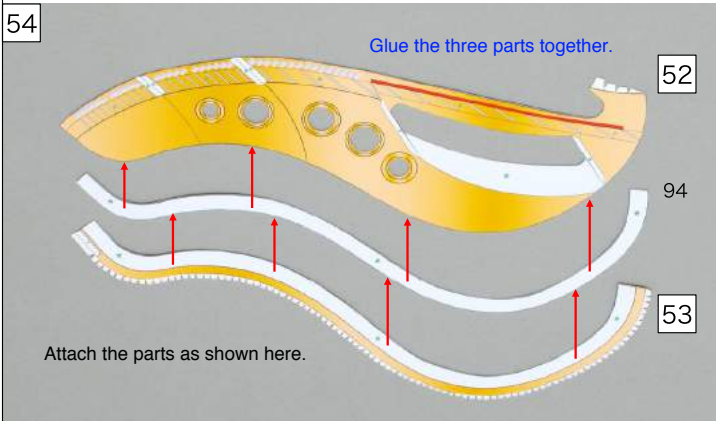
52



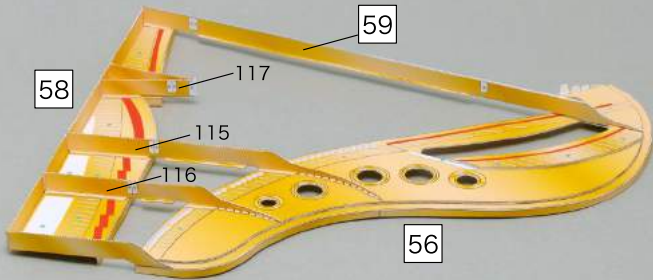
53



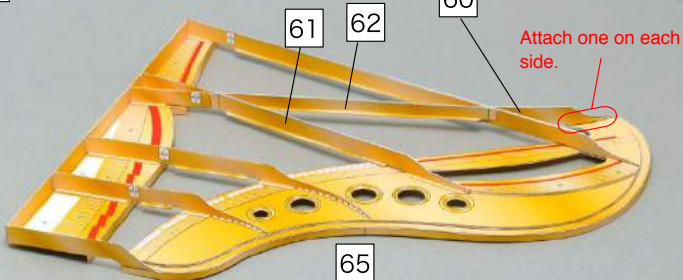
54



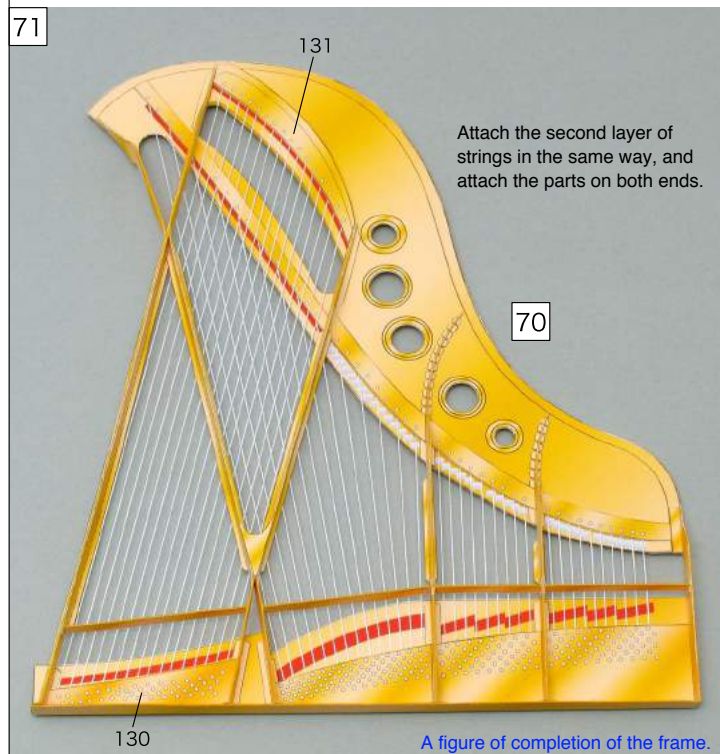
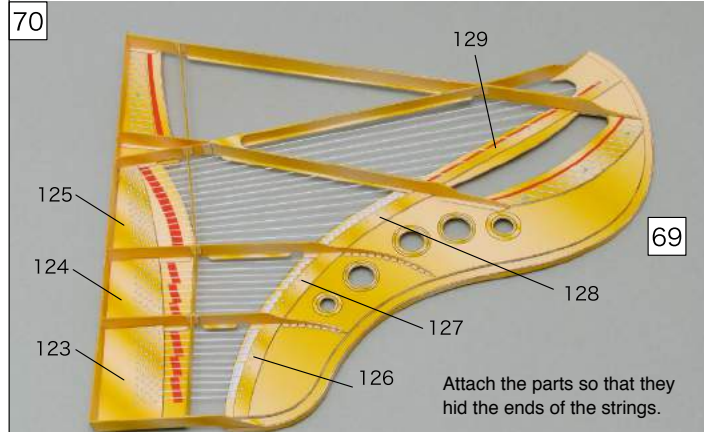
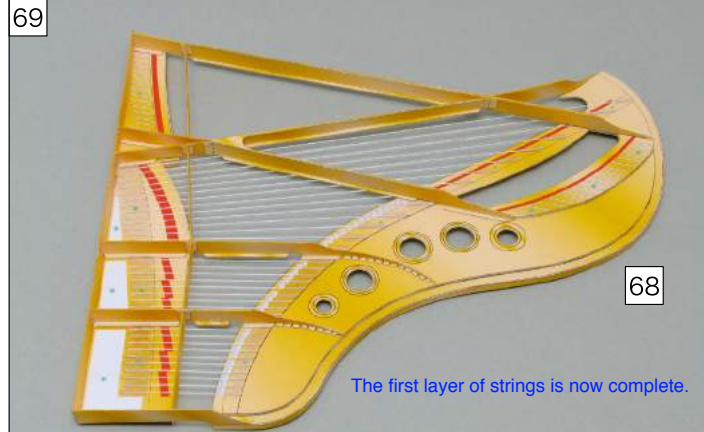
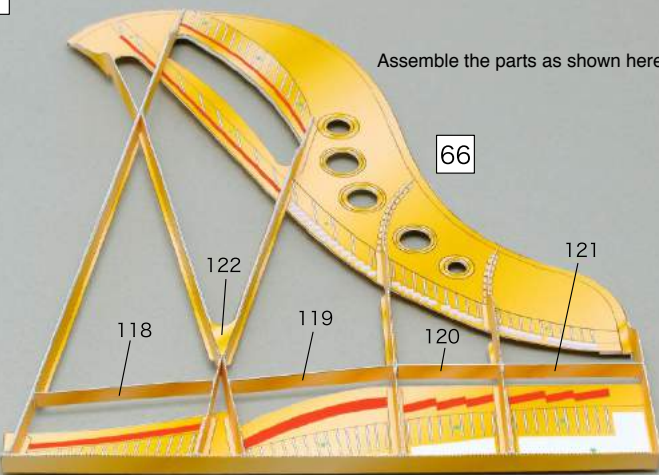
65 Assemble the parts as shown here.



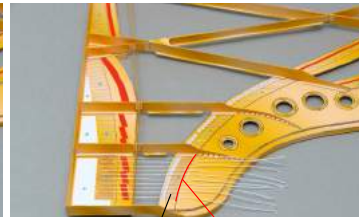
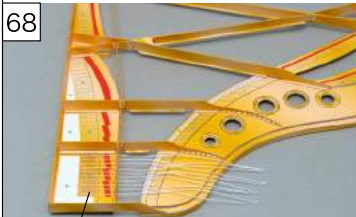
66 Assemble the parts as shown here.



67 Assemble the parts as shown here.



H Stringing the grand piano.



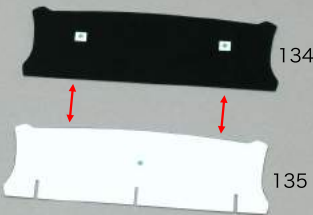
Secure the other ends of the strings with adhesive, too.

I Making the music desk.

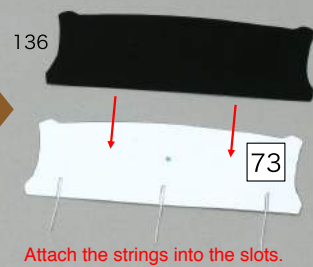
72 Assemble the parts as shown here.



73 Attach the back sides together.



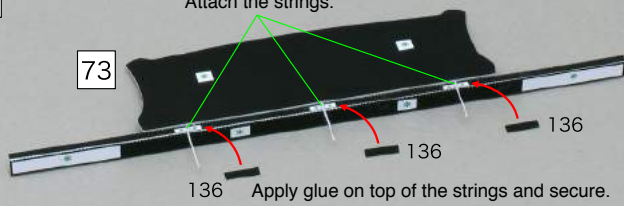
Attach 136 to the back side of made in 73.



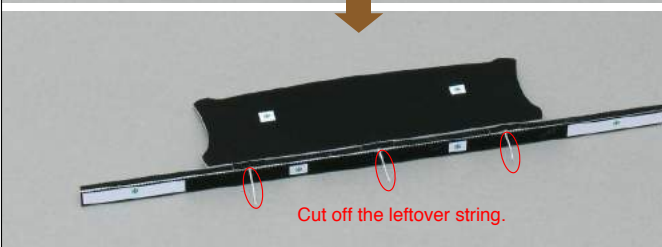
Attach the strings into the slots.

74

Attach the strings.

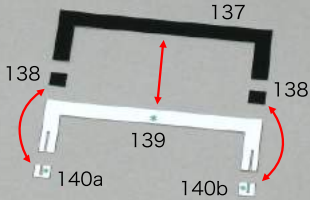


Apply glue on top of the strings and secure.

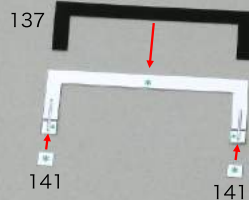


Cut off the leftover string.

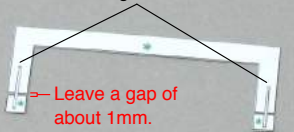
75 Attach the back sides together. ①



Attach the parts together. ③



Attach the strings into the slots. ②

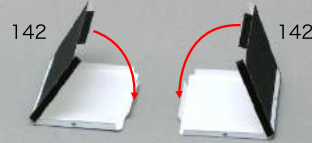


Leave a gap of about 1mm.

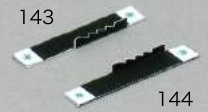
A figure of completion. ④



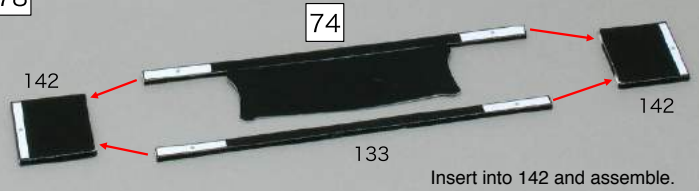
76 Assemble the parts as shown here.



77 Attach the parts.

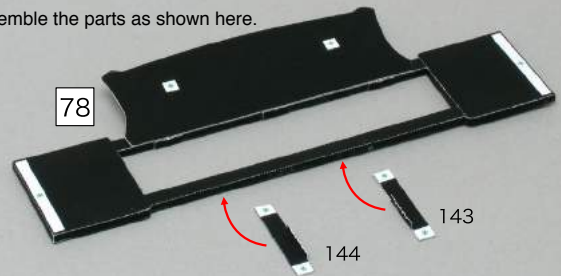


78

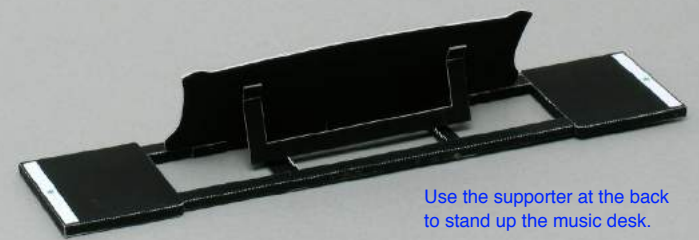
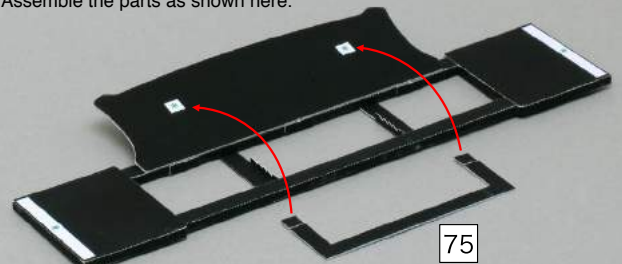


Insert into 142 and assemble.

79 Assemble the parts as shown here.



80 Assemble the parts as shown here.



Use the supporter at the back to stand up the music desk.

81 Assemble the parts as shown here.



View from back side(80).

J Making the lid prop.

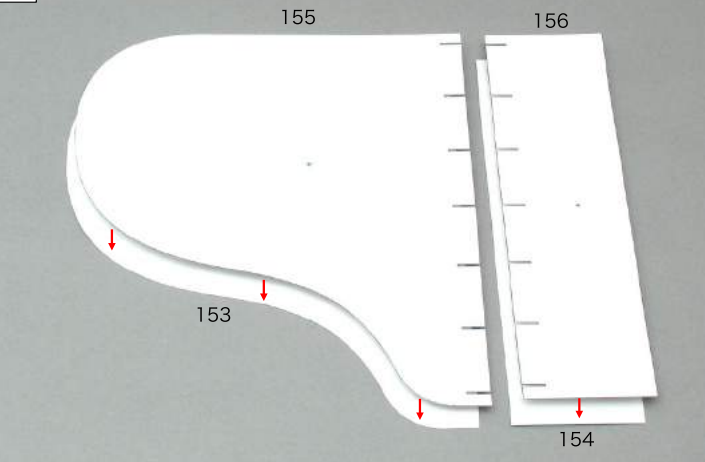
82 Assemble the parts as shown here.



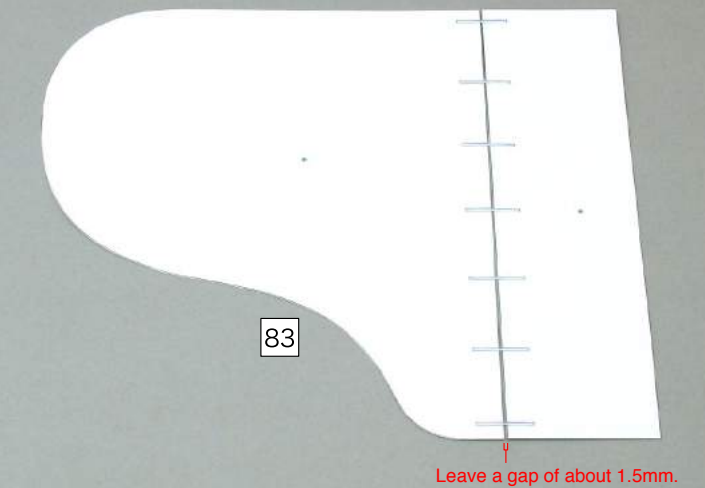
A figure of completion.

K Making the lid.

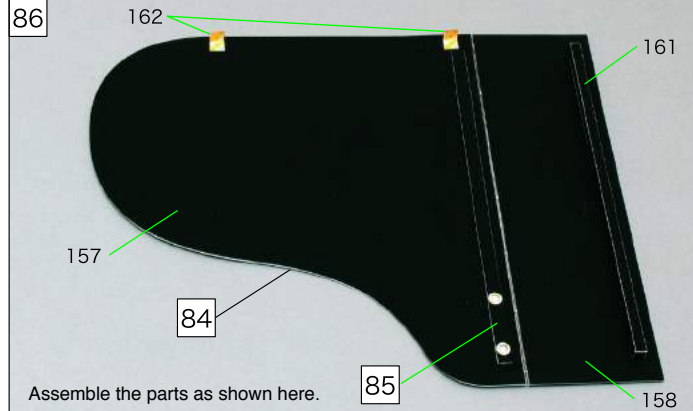
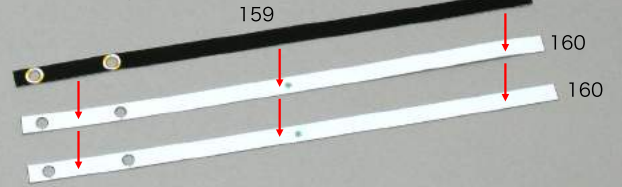
83 Attach the parts together.



84 Attach the strings into the slots.

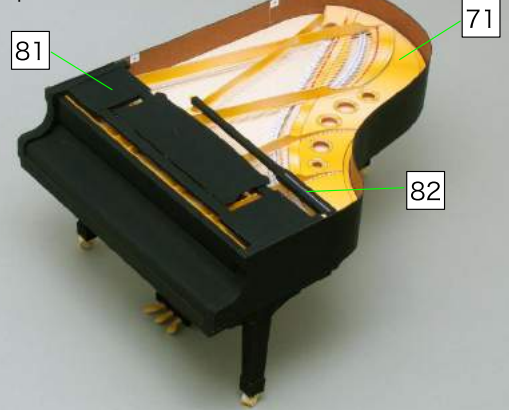


85 Attach the parts together.



L Attach each part to the body.

87 Assemble the parts as shown here.



88 Glue the lid to the body, and your Grand piano is complete!

