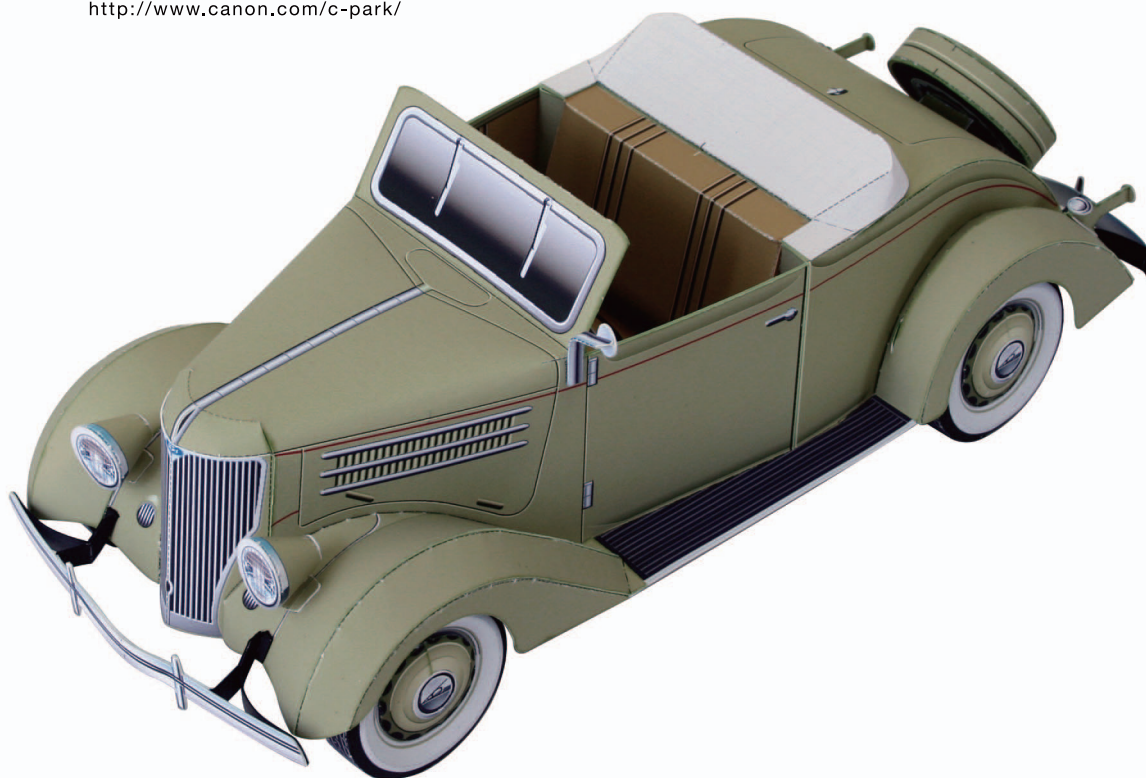


Ford Convertible Cabriolet

Pattern

CREATIVE PARK

<http://www.canon.com/c-park/>



View of completed model * This model was designed for Papercraft and may differ from the original in some respects.

Ford Convertible Cabriolet

1/24 scale

Convertible Cabriolet. As the name implies, it is a convertible model of a roofless car when the top is folded down and a coupe when the top is put up. It accommodates the driver and 2 passengers in the front seat and 3 in the rear seat (storage type: rumble seat). When the top is folded down, it is neatly stored inside the body. This style is attractive and this model is said to be the best among all other Ford models. This model was the first to adapt the steel disc wheels to replace the conventional spoke wheel.

The style of Convertible Cabriolet of the Ford 68 series in 1963 caught on popularity, but what is more interesting is the side valve (SV) type V8 engine. In sales competition with Chevrolet, Ford adapted a V8 engine to popular cars in competition with the 6 cylinder engine of Chevrolet. The major characteristic of this engine is smoothness of revolution. Compared to a 4 cylinder engine, the 6 cylinder engine had a better balance. To compete against this advantage, the V8 engine of Ford offered smoothness like an electric motor.

American devotees regard this SV type V8 engine as the secret (true) best seller car of Henry Ford and hold it dear to their hearts by calling it the "EARLY FORD V8".

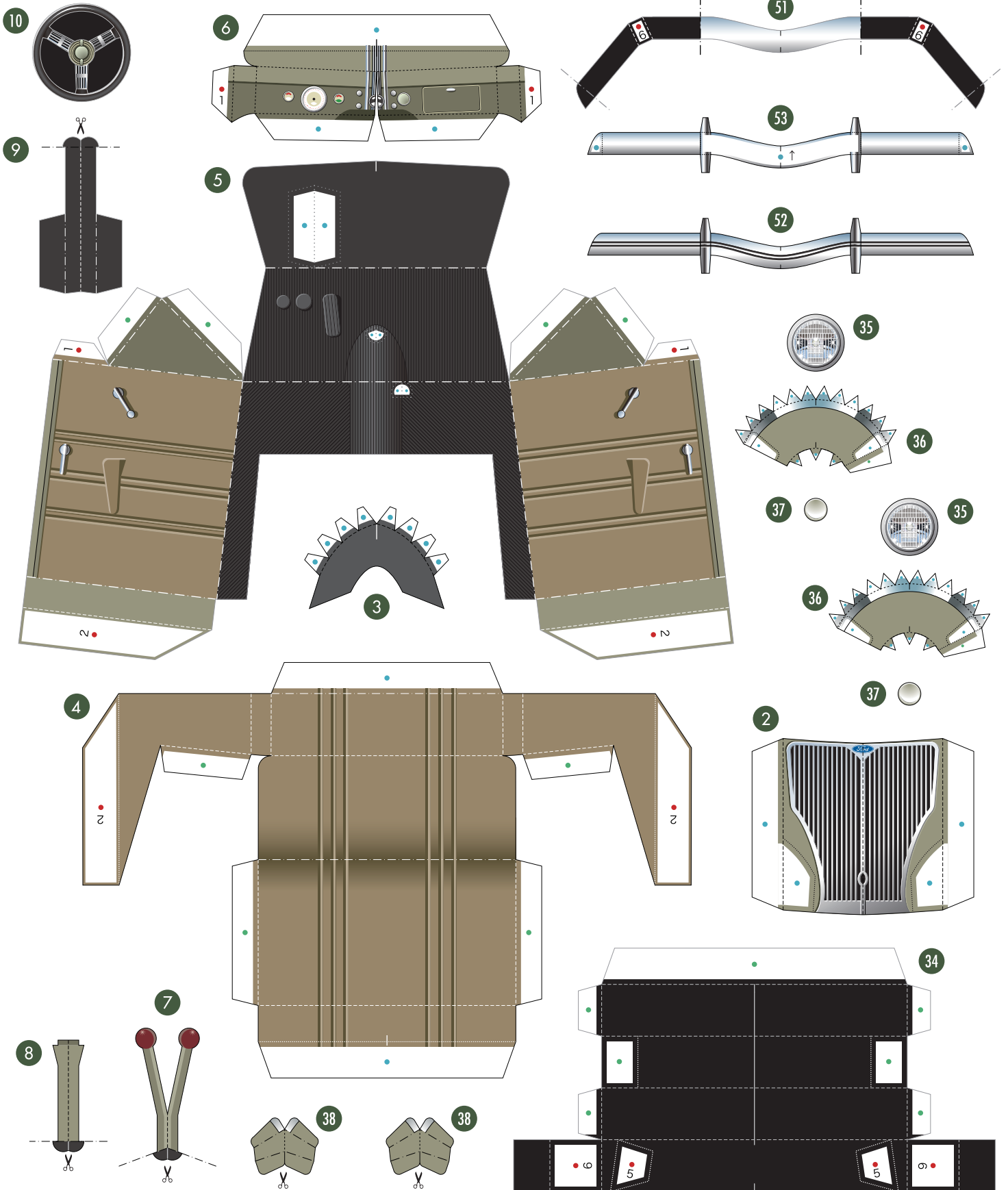
Data: Water cooled engine, V type side valve, 8 cylinders, displacement 3,621m³, 85HP

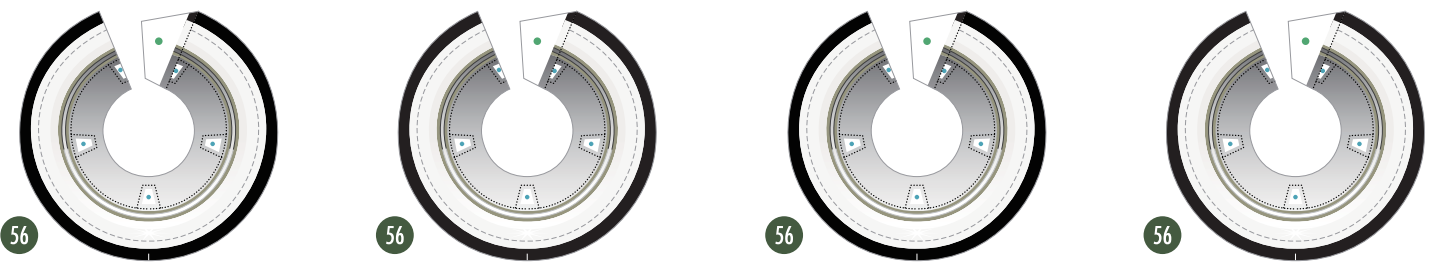
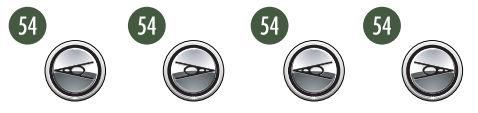
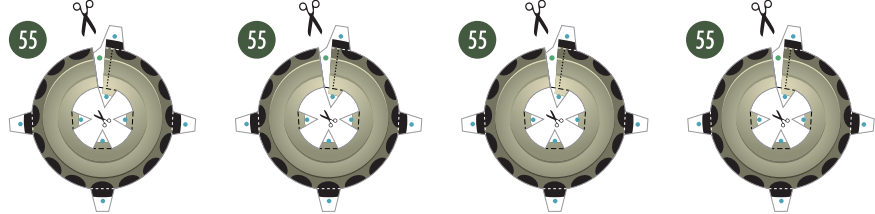
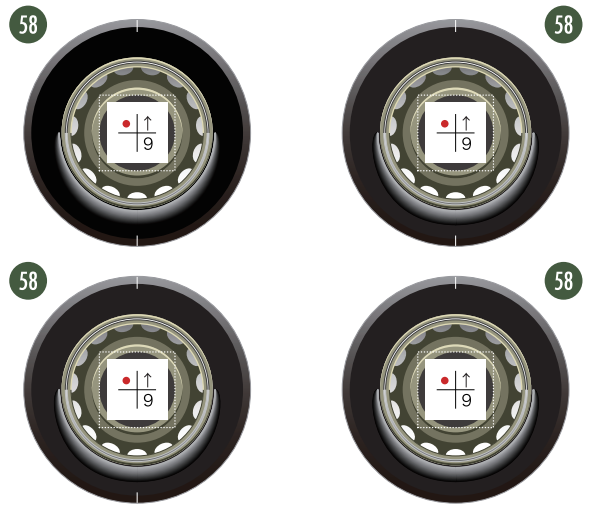
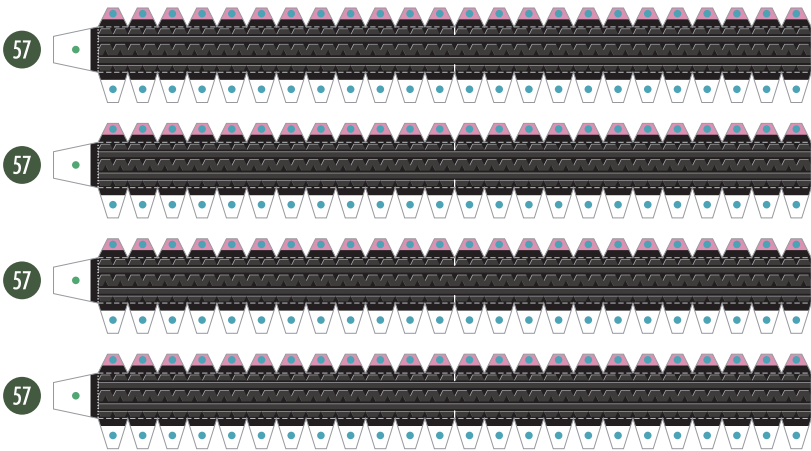
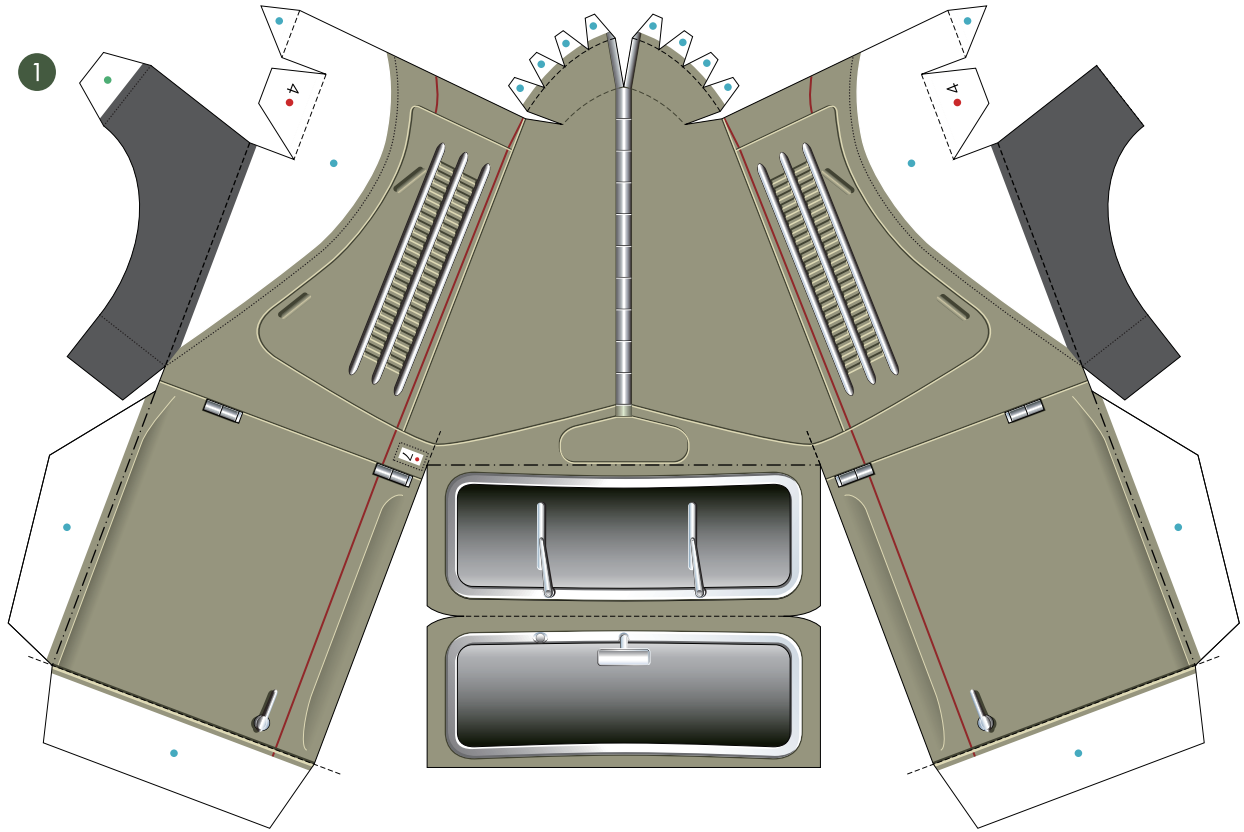
Masayoshi Oka, Japan Classic Car Association

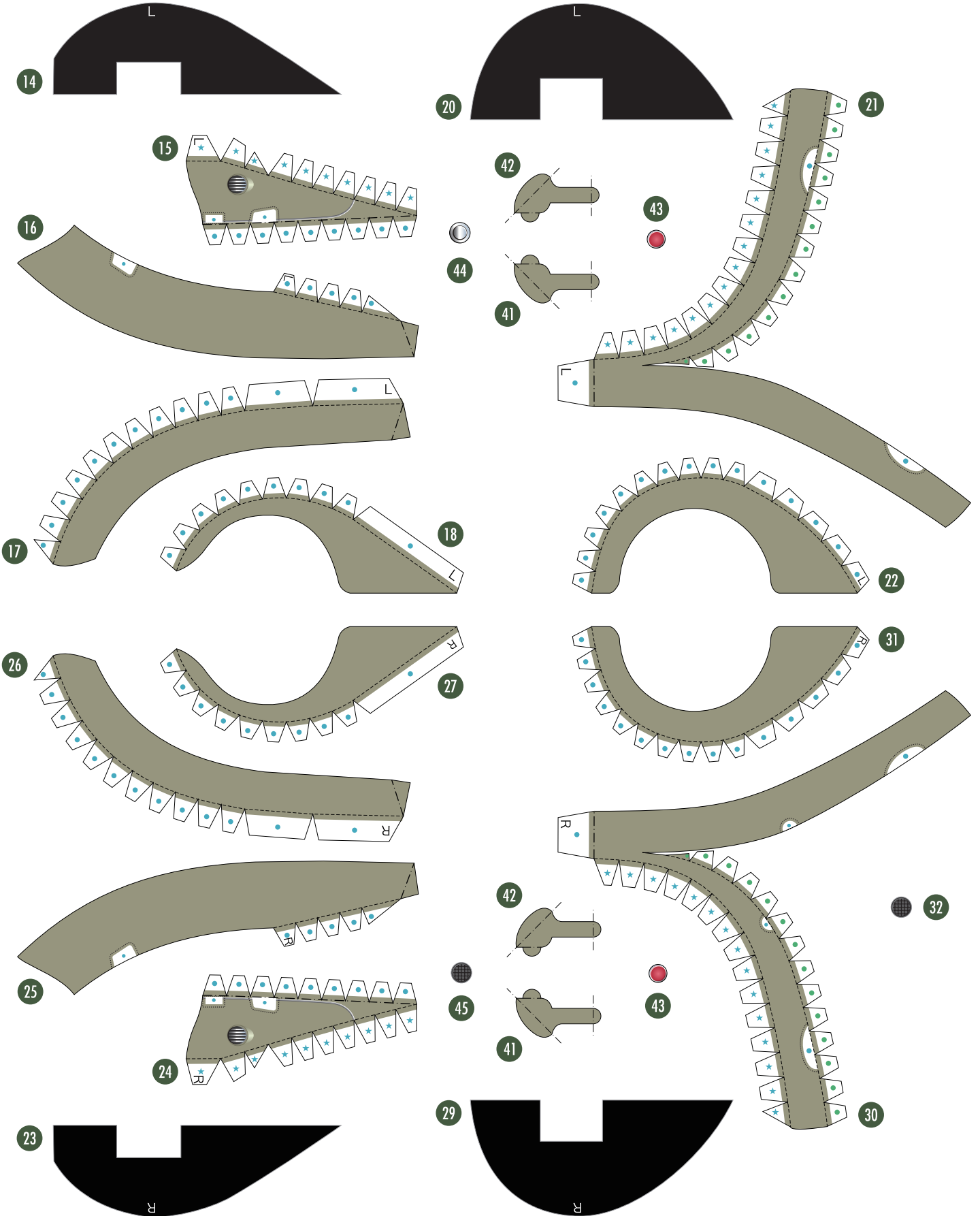
■ Parts list (pattern) : Five A4 sheets (No. 1 to No. 5)

■ No. of Parts : 85

Build the model by carefully reading the Assembly Instructions.







Ford Convertible Cabriolet

Assembly Instructions

CREATIVE PARK

<http://www.canon.com/c-park/>



View of completed model * This model was designed for Papercraft and may differ from the original in some respects.

Assembly tip

- Write the number of each part on the reverse side of the part in pencil upon cutting it out, to be sure you can tell which part is which later.
- Before gluing, crease the paper along mountain and valley fold lines. Trace along the folds with a ruler and an exhausted ballpoint pen (out of ink) to get a sharper fold.
- Make sure rounded sections are nice and stiff.

Tools

- Scissors
- Ruler, set square
- Glue (Wood glue or craft glue recommend)
- Exhausted ballpoint pen (out of ink)
- Toothpicks (for use in applying glue)
- Tweezers (useful for handling small parts)
- Pencil

Key to symbols

----- Dotted line	Mountain fold		Fold so that the printed pattern faces outside.
- - - - - Dashed and dotted line	Valley fold		Fold so that the printed pattern faces inside.
————— Solid line	Cut a notch along this line.		Cut along the center of the line.
	Scissors mark		

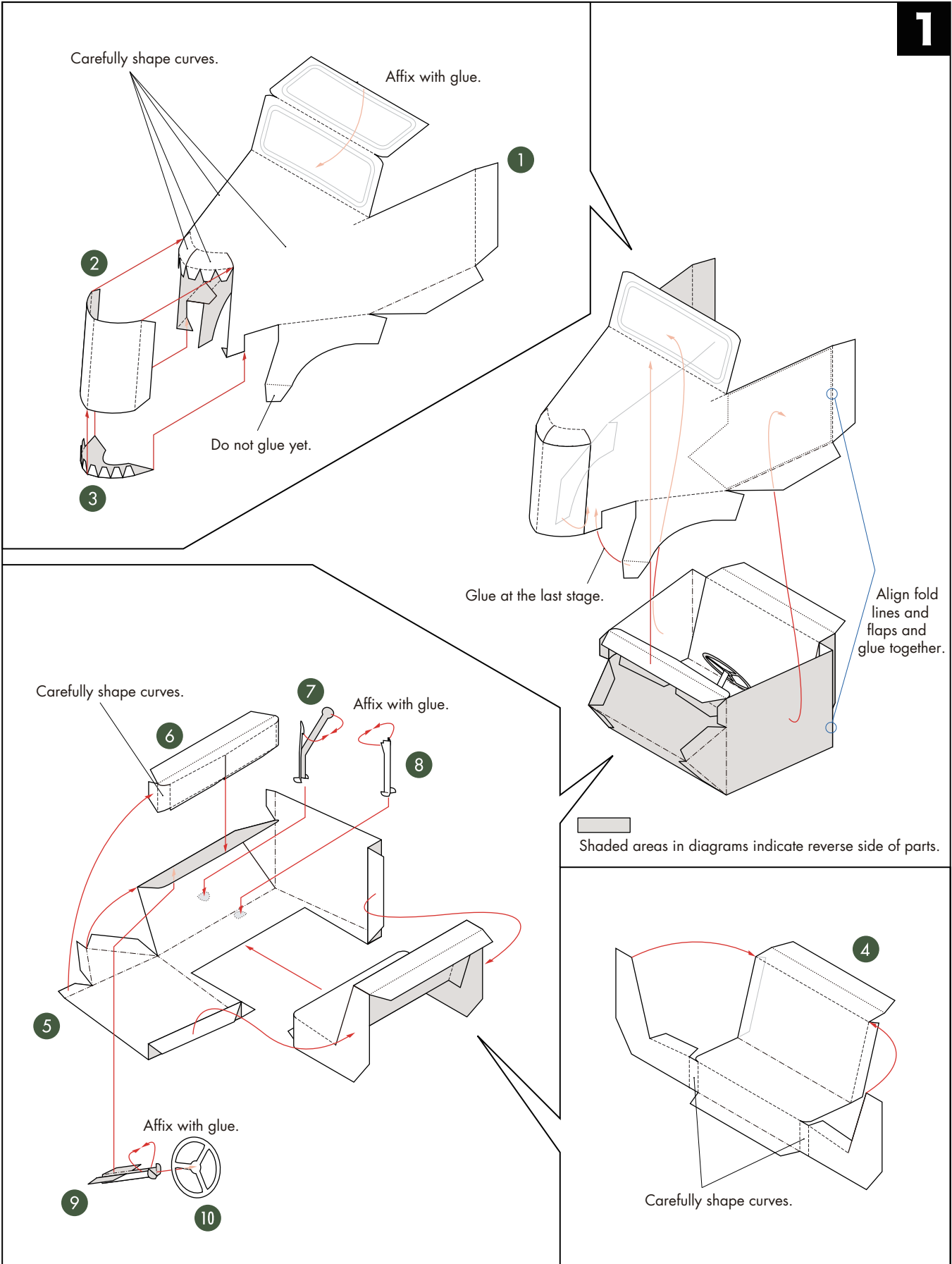
	Dots indicate parts to be glued; dotted lines indicate approximate area for application of glue.
● Red dot	Glue parts with the same number together.
● Green dot	Glue areas within the same part together.
● Blue dot	Glue to the reverse side of the specified part.
★ Blue star	Glue reverse side to reverse side of other part.

- Assembly Instructions : Six A4 sheets (No. 1 to No. 6)
Build this model with careful reference to the Assembly Instructions.

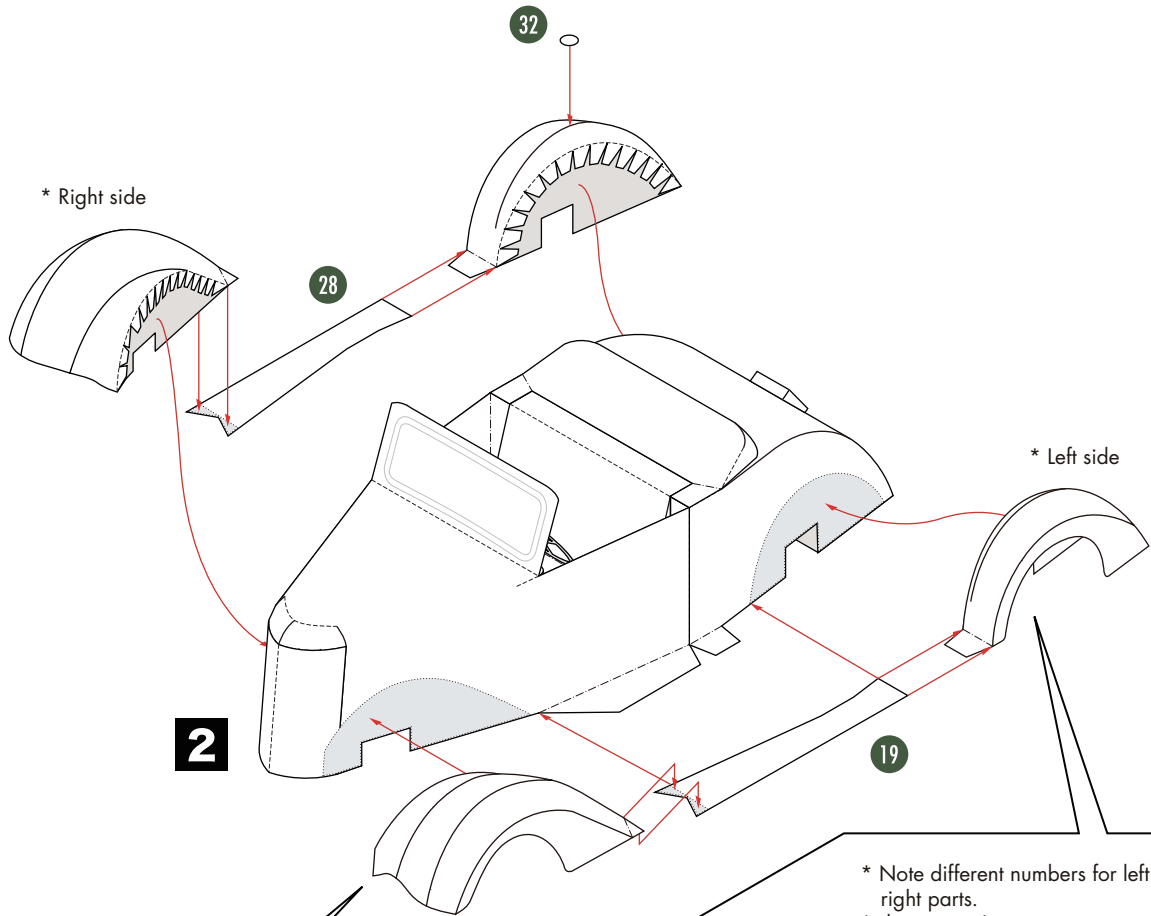


Glue, scissors and other tools may be dangerous to young children so be sure to keep them out of the reach of young children.

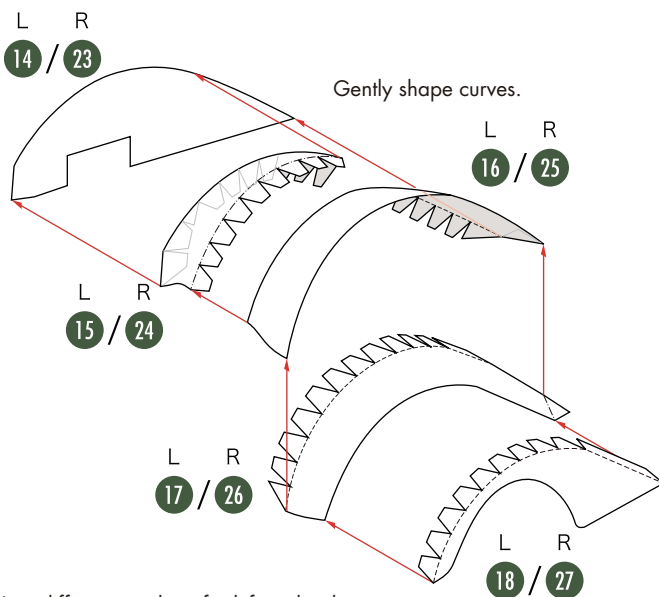
1



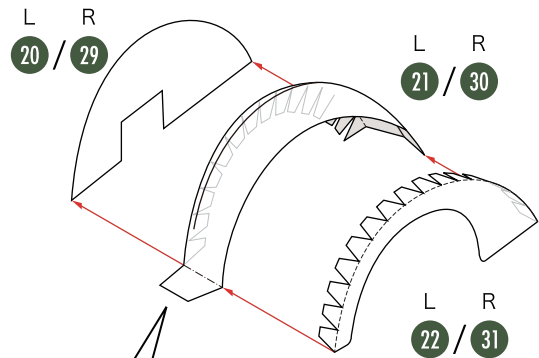
3



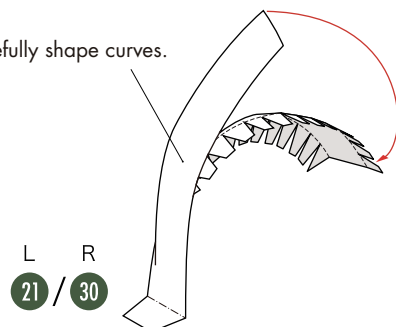
* Note different numbers for left and right parts.
* diagram is L



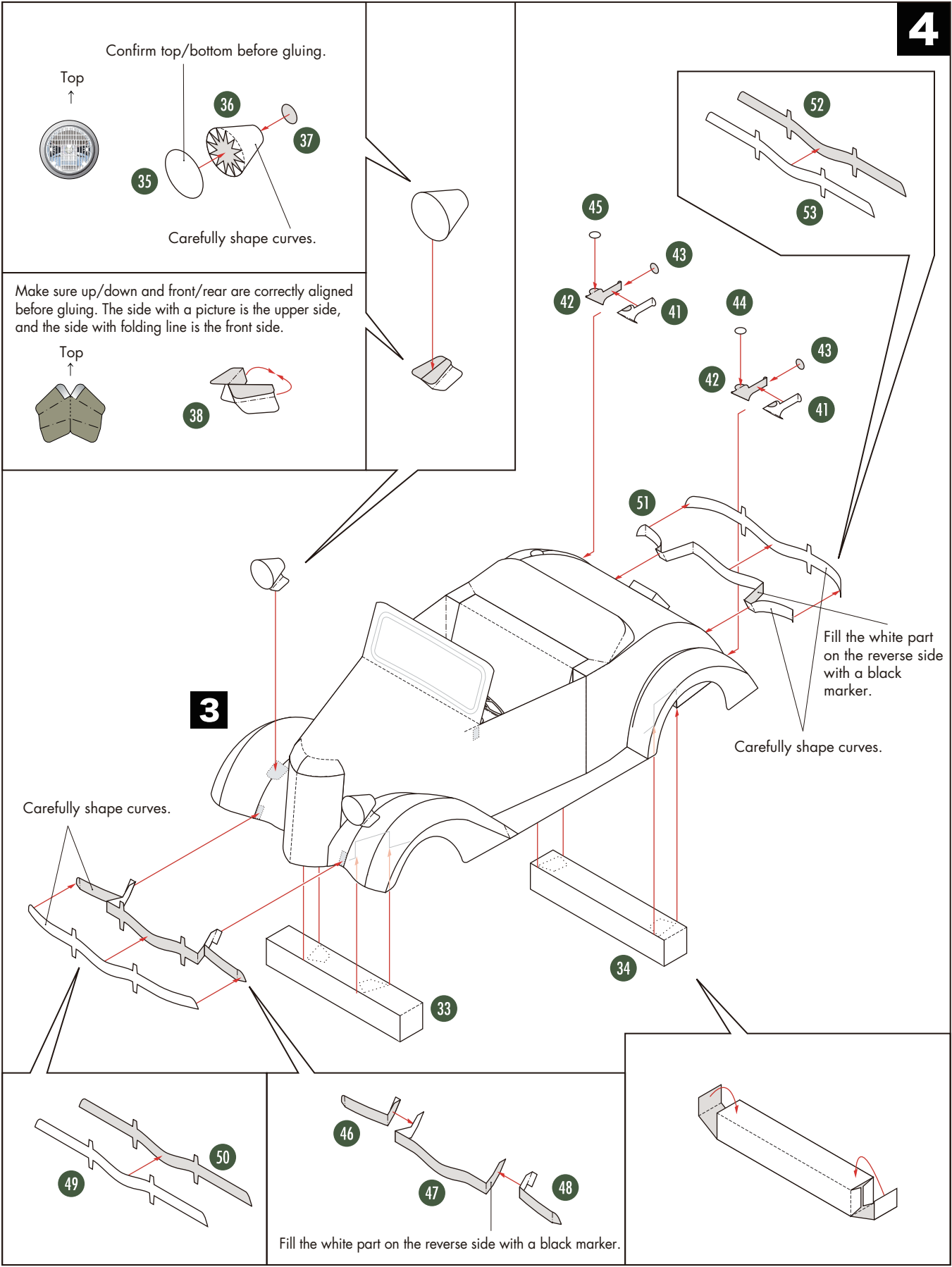
* Note different numbers for left and right parts.
* diagram is L



Carefully shape curves.



4



3

5

