



<http://www.canon.com/c-park/en/>



View of completed model

## Arc de Triomphe, France

The formal name of this structure, a symbol of Paris, is *l'Arc de Triomphe de l'Etoile*, based on the twelve avenues radiating from the center of the Arc de Triomphe, creating a star (etoile) pattern. The Arc de Triomphe was built in the 19th century by Napoleon Bonaparte to celebrate his military triumphs, following the custom of ancient Rome. Its sides are decorated with engravings and reliefs depicting scenes from Napoleon's battles.

\*This model was designed for Papercraft and may differ from the original in some respects.

■ Parts list(pattern):Five A4 sheets(No.1 to No.5)

■ No. of Parts:26

\*Build the model by carefully reading the Assembly Instructions, in the parts sheet page order.



Front view



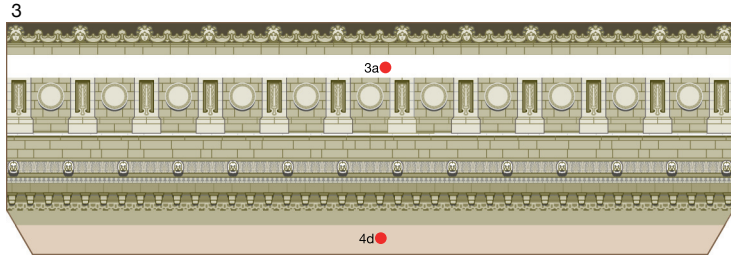
Rear view



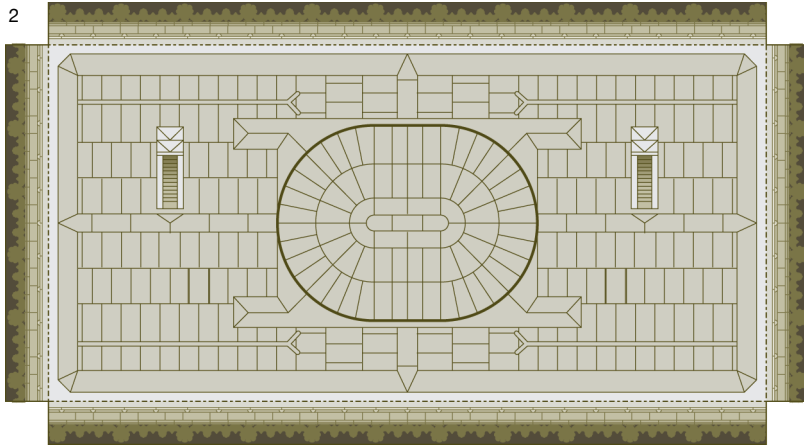
Side view 1

Side view 2

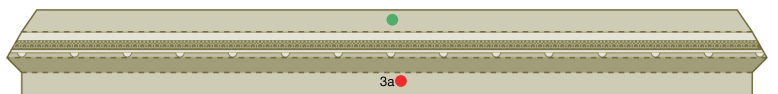
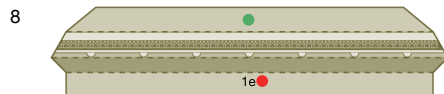
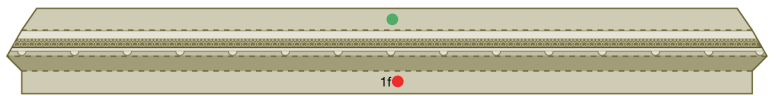
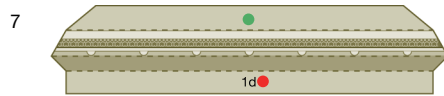
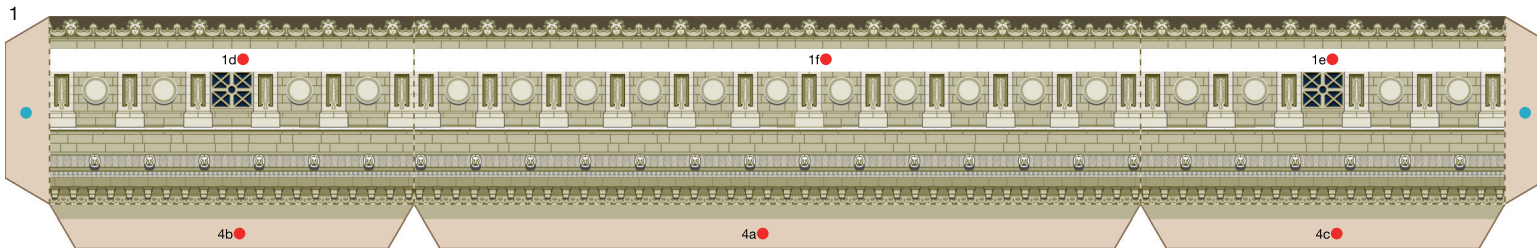
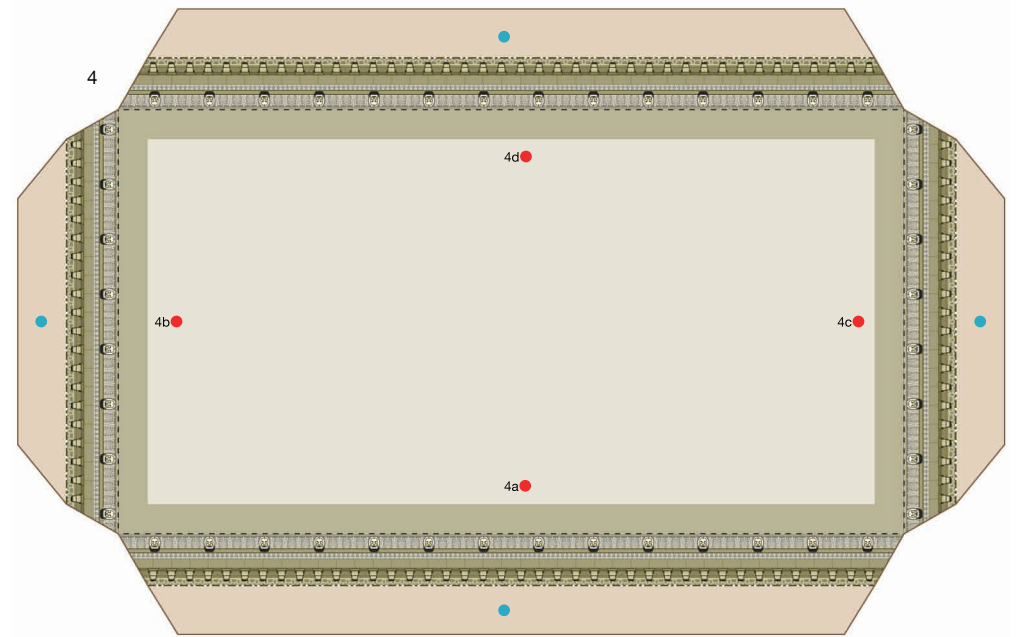
# Arc de Triomphe, France: Pattern



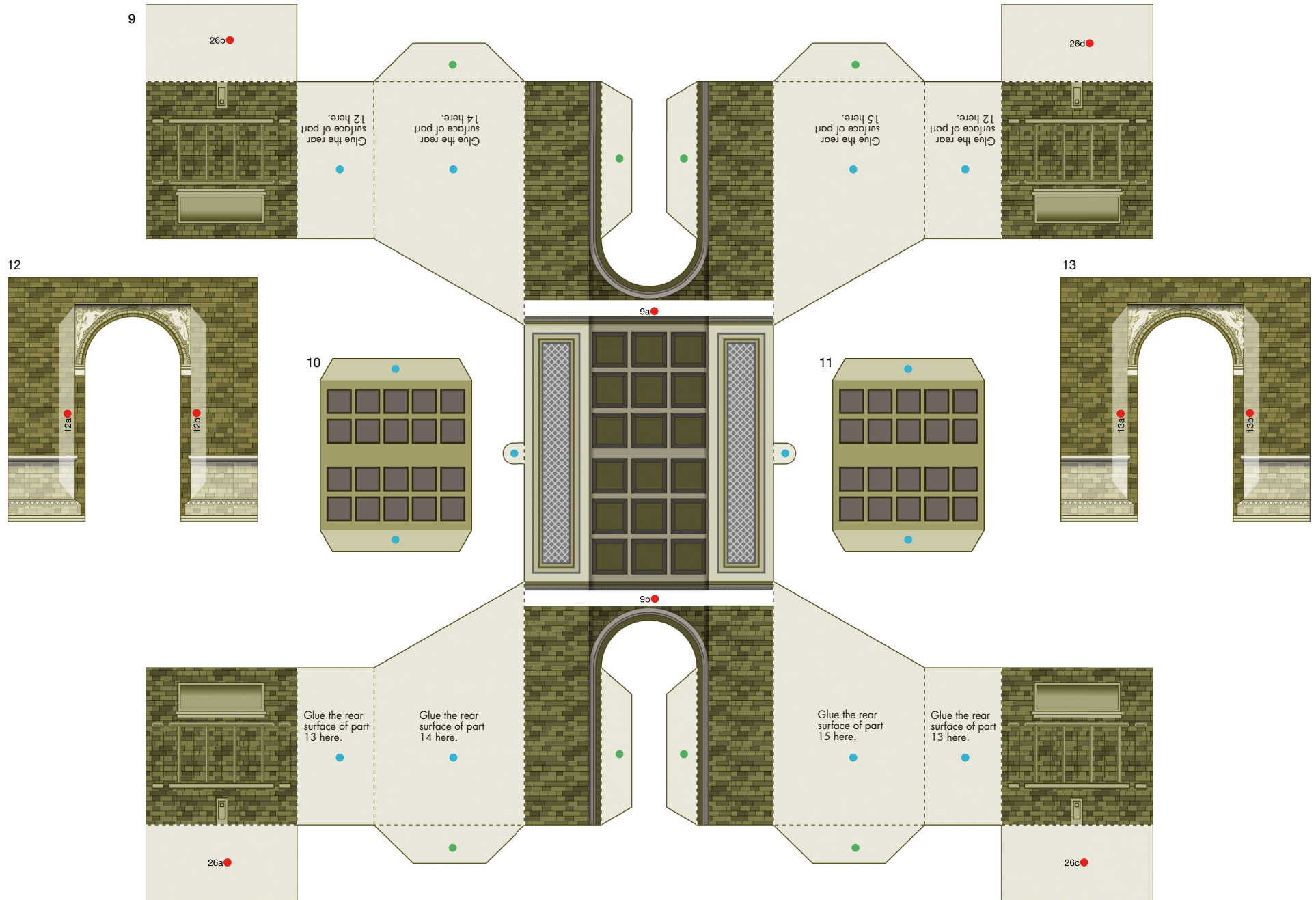
Rear



Front



# Arc de Triomphe, France: Pattern





# Arc de Triomphe, France: Pattern

Canon® is a registered trademark of Canon Inc. © Canon Inc. © Y.Watanabe

